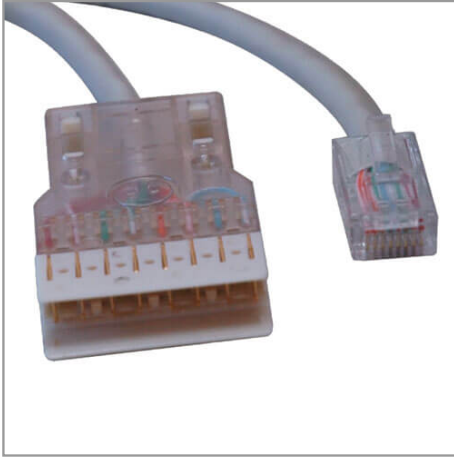


Cat5e 350 MHz (UTP) Ethernet Cable (RJ45M/110) - Gray, 25 ft. (7.62 m)

MODEL NUMBER: **N017-025-GY**



Highlights

- RJ45 to 110, 25-ft. (7.62 m)
- Easily connects to 110 Punch Down blocks
- Cat5e 100mb rated

Package Includes

25-ft. (7.62 m) RJ45 to 110 Cat5e Patch Cable

Features

- RJ45 to 110, 25-ft. (7.62 m)
- 4-pair stranded Cat5e patch cable
- Gray PVC jacket

Specifications

OVERVIEW	
UPC Code	037332142382
Technology	Cat5/5e
CONNECTIONS	
Side A - Connector 1	RJ45 (MALE)
Side B - Connector 1	110 (MALE)
PHYSICAL	
Color	Gray
Cable Shielding	UTP
Wire Type	Stranded
Cable Length (ft.)	25
Cable Length (m)	7.62
Cable Length (in.)	300
Cable Length (cm)	762



Powering Business Worldwide



Shipping Dimensions (hwd / in.)	11.00 x 7.00 x 0.50
Shipping Dimensions (hwd / cm)	27.94 x 17.78 x 1.27
Shipping Weight (lbs.)	0.75
Shipping Weight (kg)	0.34
FEATURES & SPECIFICATIONS	
Snagless Connector	No
WARRANTY & SUPPORT	
Product Warranty Period (Worldwide)	Lifetime limited warranty

1000 Eaton Boulevard
Cleveland, OH 44122
United States
<https://tripplite.eaton.com>

© 2024 Eaton. All Rights Reserved.
Eaton is a registered trademark. All other trademarks
are the property of their respective owners.