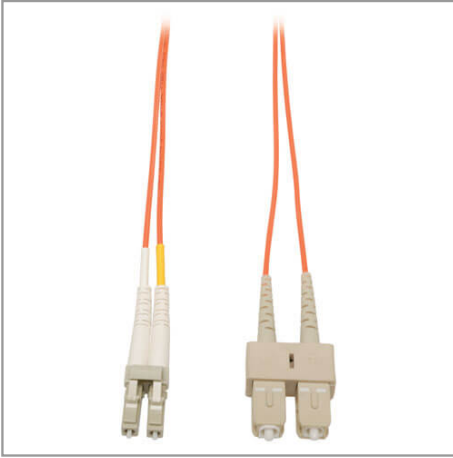


## Duplex Multimode 62.5/125 Fiber Patch Cable (LC/SC), 30M (100 ft.)

MODEL NUMBER: N316-30M



### Highlights

- Premium PVC 62.5/125µm multimode patch cables
- Attenuation loss meets or exceeds the latest industry standards

### System Requirements

- Any fiber optic hardware or NIC card requiring multimode duplex cable with SC/LC connectors

### Package Includes

- 30 meter ( 100ft ) Duplex MMF Cable LC/SC 62.5/125 Fiber

### Description

This multimode duplex fiber optic SC/LC Ethernet cable is manufactured from 62.5/125 zipcord fiber. The cable has LC to SC connectors, a PVC jacket and is FDDI and OFNR rated. Duplex multimode fiber is most commonly used in LAN applications.

### Features

- Manufactured from 62.5/125 duplex (zipcord) fiber
- PVC jacket
- Length: 30-meter (100ft) Connectors: 2 SC/LC connectors on each end
- Insertion loss testing performed on every connector (0.2db typical) and provided with cable
- Beveled edge on ends of glass makes insertion of plug a breeze
- Fiber made from glass (not a polymer)

## Specifications

OVERVIEW	
UPC Code	037332135018
Technology	Multimode
Optical Mode	OM1
CONNECTIONS	
Side A - Connector 1	LC DUPLEX (MALE)
Side B - Connector 1	SC DUPLEX (MALE)
Endface Polish	PC



Powering Business Worldwide

TRIPP LITE  
SERIES

PHYSICAL	
Cable Jacket Color	Orange
Connector Color	White; Beige
Cable Jacket Material	LSZH
Cable Jacket Rating	OFNR
Clad Diameter (microns)	125
Core Diameter (microns)	62.5
Number of Fibers	2
Cable Length (ft.)	98.4
Cable Length (m)	30.00
Cable Length (in.)	1181.1
Minimum Bend Radius	20 mm (Dynamic); 10 mm (Static)
Shipping Dimensions (hwd / in.)	10.00 x 8.00 x 1.00
Shipping Dimensions (hwd / cm)	25.40 x 20.32 x 2.54
Shipping Weight (lbs.)	0.33
Shipping Weight (kg)	0.15
Fiber Cable Length	30M (98.4 ft)
ENVIRONMENTAL	
Operating Temperature Range	-4° to 140°F (-20° to 60°C)
Storage Temperature Range	-4° to 140°F (-20° to 60°C)
Operating Humidity Range	5% to 85% RH, Non-Condensing
Storage Humidity Range	35% to 65% RH, Non-Condensing
COMMUNICATIONS	
Network Compatibility	1 Gbps (Gigabit); 10 Gbps
Attenuation @ 850NM	3.0 dB/km
Insertion Loss	LC 0.20 dB; SC 0.20 dB
FEATURES & SPECIFICATIONS	
Push/Pull Tabs	No
Breakout	No
Trunk	No
STANDARDS & COMPLIANCE	
Product Compliance	RoHS; REACH



Powering Business Worldwide

TRIPP LITE  
SERIES

**WARRANTY & SUPPORT**

Product Warranty Period  
(Worldwide)

Lifetime limited warranty

1000 Eaton Boulevard  
Cleveland, OH 44122  
United States  
<https://tripplite.eaton.com>

© 2024 Eaton. All Rights Reserved.  
Eaton is a registered trademark. All other trademarks  
are the property of their respective owners.