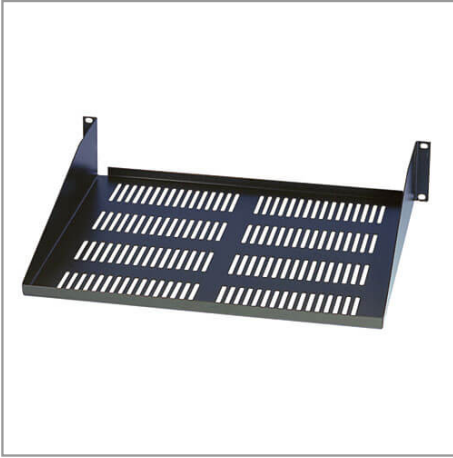


SmartRack Accessory - Fixed Shelf, 2U Cantilever mount - 2 or 4-Post

MODEL NUMBER: SR204



Highlights

- Fixed Shelf, 2U Cantilever mount. Required mounting hardware included
- 2 or 4 post rack compatible
- 18 inch shelf depth
- Cantilever shelf supports monitors and other equipment
- Cold rolled steel with black finish.
- Use two shelves back to back to create a deep fixed shelf in 2POST racks

Package Includes

- Shelf and mounting hardware

Description

A complete line of SmartRack accessories are available to customize your SmartRack to your application. Designed for easy installation and years of reliable service, SmartRack accessories from Tripp Lite are ideal compliments to your SmartRack enclosure or open frame rack system. Fixed Shelf, 2U Cantilever mount, Cold rolled steel with black finish. Required mounting hardware included. Supports up to 60 lbs. Use two shelves back to back to create a deep fixed shelf in 2POST racks.

Specifications

OVERVIEW	
UPC Code	037332123886
Accessory Type	Rack Shelves
Accessory Class	Rack Accessories
PHYSICAL	
Shipping Dimensions (hwd / in.)	4.25 x 19.50 x 19.75
Shipping Dimensions (hwd / cm)	10.80 x 49.53 x 50.16
Shipping Weight (lbs.)	15.00
Shipping Weight (kg)	6.80