

Tripp Lite World Headquarters
1111 W. 35th Street, Chicago, IL 60609 USA
(773) 869-1234, www.tripplite.com

User's Manual

USB 2.0 File Transfer Cable (6 ft.)

Model #: U232-006



Note: Follow these instructions and operating procedures to ensure correct performance and to prevent damage to this unit or to its connected devices.

Copyright © 2004 Tripp Lite. All rights reserved. All trademarks are the property of their respective owners. The policy of Tripp Lite is one of continuous improvement. Specifications are subject to change without notice.

This package should consist of:

- 1 U232-006 USB 2.0 File Transfer Cable
- 1 User's Manual
- Driver Software on CD

Table of Contents

	Page
1. Overview	3
2. Product Features	3
3. System Requirements	3
4. Driver Installation (PC-to-PC File Transfer)	3
4.1 Windows® 98 Driver Installation	3
4.2 Windows® 98 Driver Uninstallation.....	6
4.3 Windows® ME Driver Installation	7
4.4 Windows® ME Driver Uninstallation.....	9
4.5 Windows® 2000 Driver Installation	10
4.6 Windows® 2000 Driver Uninstallation.....	11
4.7 Windows® XP Driver Installation	12
4.8 Windows® XP Driver Uninstallation	15
5. Running the SuperLink Software (PC-to-PC File Transfer)	16
5.1 Windows® 98, ME, Windows® 2000 & Windows® XP	16
6. Using USB Networking (Ethernet Emulation)	17
7. FAQ	18
8. Warranty & FCC Statement	18

1. Overview

This U232-006 USB 2.0 high speed cable provides a simple way to connect two computers via their USB ports in order to quickly and easily transfer files. The cable provides true plug-and-play capability while transferring files at much greater speed than USB 1.1 file transfer products.

SuperLink application program provides drag-and-drop user-friendly interface to transfer files. You simply plug in the U232-006 cable and install the application software into your PC.

VirtualNet application program provides USB Networking and emulates Ethernet.

2. Product Features

- USB specification revision 2.0 compliant
- Single cable solution for files transfer
- Printer and storage (device Hard drive, floppy and CD-ROM) sharing
- Drag-and-drop user-friendly interface. Includes power management and remote wake-up functions
- Support TCP/IP, NetBEUI, IPX/SPX protocols
- USB Networking - Ethernet emulation

3. System Requirements

- IBM® PC Pentium 133 or higher or compatible system
- Available USB 2.0 port (up to 480 Mbps) or available USB 1.1 port (up to 12Mbps)
- CD-ROM drive
- Windows® 98, Windows® ME, Windows® 2000 and Windows® XP

4. Driver Installation (PC-to-PC File Transfer)

4.1 Windows® 98 Driver Installation

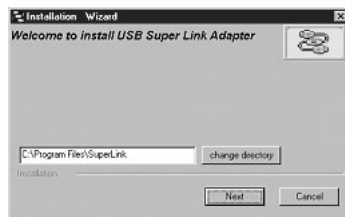
4.1.1 Power on both computers and make sure USB port on each computer is enabled and working properly.

4.1.2 Select the path "D:\DRIVER\BF-7311\WINDOWS\Super Link_Install" (D: represents CD-ROM) and click on "Setup.exe" twice to install driver.

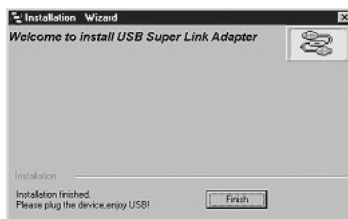
Attention: Do not plug the U232-006 Cable into the PC's USB Port when installing the driver.



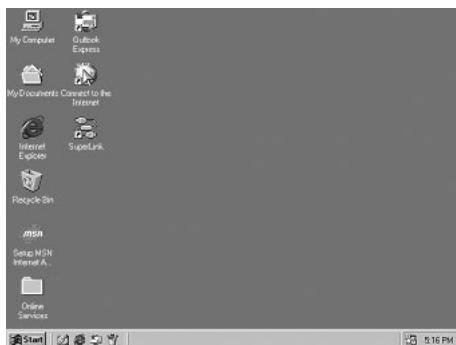
4.1.3 Windows® will install driver at "C:\Program Files\SuperLink". You may put the driver into another folder and click "Next" to continue.



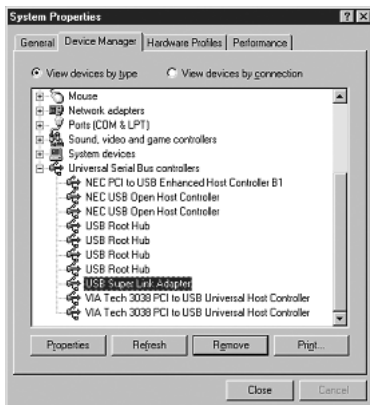
4.1.4 Click on "Finish" to complete this installation.



4.1.5 After installation, there will have a new icon "**SuperLink**" at desktop.



4.1.6 Plug the U232-006 Cable into USB Port of your PC. You will find the new item "**USB SuperLink Adapter**" under the "**Universal Serial Bus Controllers**" in your "**Device Manager**".

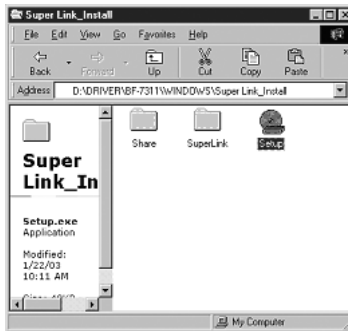


4.2 Windows® 98 Driver Uninstallation

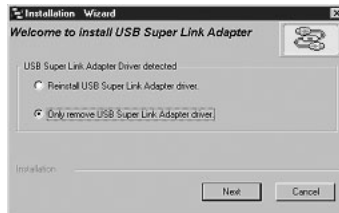
Perform the following uninstall procedure if you don't want to use this cable and want to delete this driver from the PC.

Note: Before you perform the uninstall procedure, make sure that the U232-006 Cable has been disconnected from your PC.

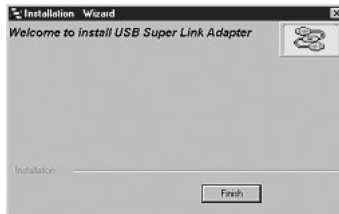
4.2.1 Point to path of "D:\DRIVER\BF-7311\WINDOWS\Super Link_Install" and double click on "Setup.exe".



4.2.2 Select "Only remove USB Link Adapter driver", and then click "Next" to continue.



4.2.3 Click "Finish" to end this uninstall procedure.

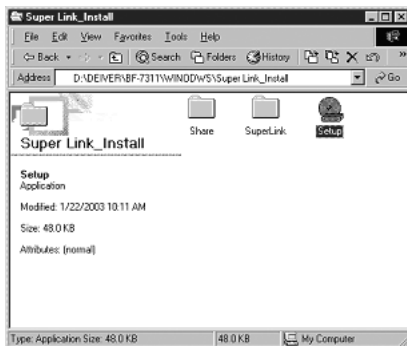


4.3 Windows® ME Driver Installation

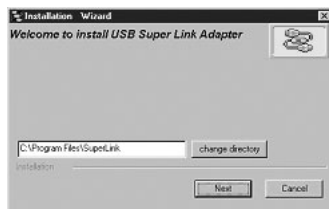
4.3.1 Power on both computers and make sure USB port on each computer is enabled and working properly.

4.3.2 Select the path "**D:\DRIVER\BF-7311\WINDOWS\Super Link_Install**" (D: represents CD-ROM) and click on "**Setup.exe**" twice to install driver.

Attention: Do not plug the U232-006 Cable into the PC's USB Port when installing the driver.



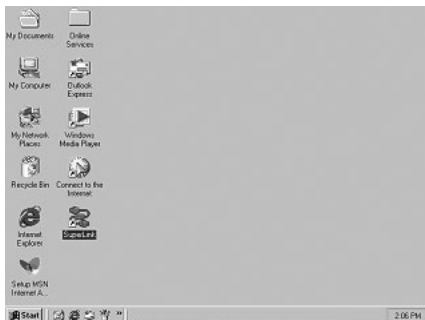
4.3.3 Windows® will install the driver at "**C:\Program Files\SuperLink**". You may put the driver into another folder. Click "**Next**" to continue.



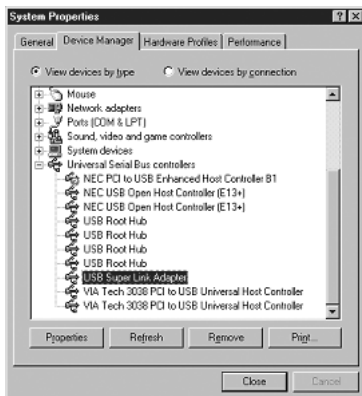
4.3.4 Click on "**Finish**" to end this installation.



4.3.5 After this installation, you will see a new icon "SuperLink" on the desktop.



4.3.6 Plug the U232-006 Cable into USB Port of your PC. You will find the new item "USB SuperLink Adapter" under the "Universal Serial Bus Controllers" in your "Device Manager".



4.4 Windows® ME Driver Uninstallation

Perform the following uninstall procedure if you don't want to use this cable and want to delete this driver from the PC.

Note: Before you perform the uninstall procedure, make sure that the U232-006 Cable has been disconnected from your PC.

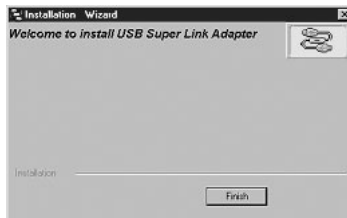
4.4.1 Point to the path of "D:\DRIVER\BF-7311\WINDOWS\Super Link_Install" and double click on "Setup.exe".



4.4.2 Select "Only remove USB Link Adapter driver", and then click "Next" to continue.



4.4.3 Click "Finish" to complete this uninstall procedure.



4.5 Windows® 2000 Driver Installation

4.5.1 Power on both computers and make sure USB port on each computer is enabled and working properly.

4.5.2 Select path of "**D:\DRIVER\BF-7311\WINDOWS\Super Link_Install**" (D: represents CD-ROM) and click on "**Setup.exe**" twice to install driver.

Attention: Do not plug the U232-006 Cable into the PC's USB Port when installing the driver.

4.5.3 Windows® will install the driver at "**C:\Program Files\SuperLink**". You may put the driver into another folder. Click "**Next**" to continue.



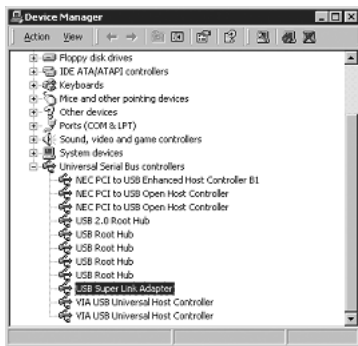
4.5.4 Click on "**Finish**" to complete this installation.



4.5.5 After installation, you will see a new icon "**SuperLink**" on the desktop.



4.5.6 Plug the U232-006 Cable into USB Port of PC. You will find a new item "USB SuperLink Adapter" at "Universal Serial Bus Controllers" of "Device Manager".



4.6 Windows® 2000 Driver Uninstallation

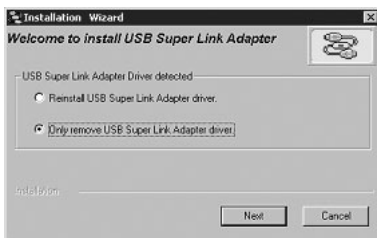
Perform the following uninstall procedure if you don't want to use this cable and want to delete this driver from the PC.

Note: Before you perform the uninstall procedure, make sure that the U232-006 Cable has been disconnected from your PC.

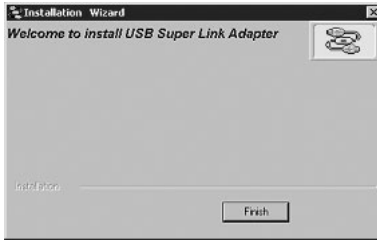
4.6.1 Point to path of "D:\DRIVER\BF-7311\WINDOWS\Super Link_Install" and double click on "Setup.exe".



4.6.2 Select "Only remove USB Link Adapter driver", and then click "Next" to continue.



4.6.3 Click "**Finish**" to complete this uninstall procedure.

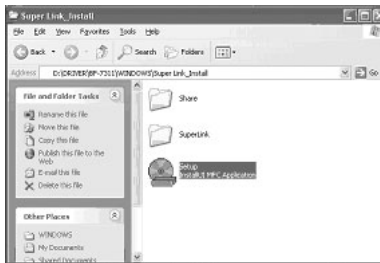


4.7 Windows® XP Driver Installation

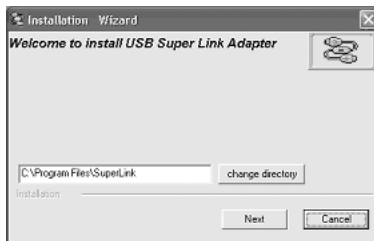
4.7.1 Power on both computers and make sure USB port on each computer is enabled and working properly.

4.7.2 Select path of "**D:\DRIVER\BF-7311\WINDOWS\Super Link_Install**" (D: represents CD-ROM) and click on "**Setup.exe**" twice to install driver.

Attention: Do not plug the U232-006 Cable into the PC's USB Port when installing the driver.



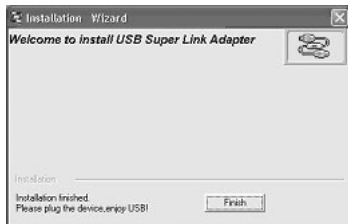
4.7.3 Windows® will install the driver at "**C:\Program Files\SuperLink**". You may put the driver into another folder. Click "**Next**" to continue.



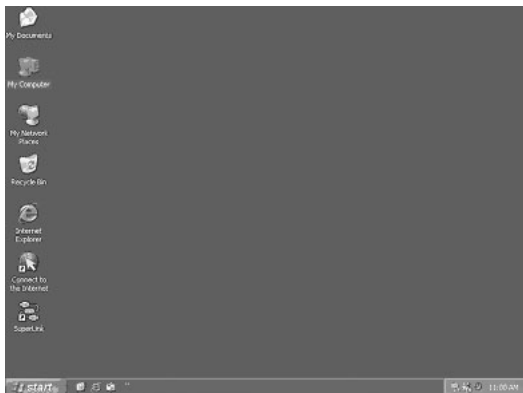
4.7.4 Windows® will display the following warning message. Press "**Continue Anyway**" to go on with this installation.



4.7.5 Click on "**Finish**" to complete this installation.



4.7.6 After installation, you will see a new icon "**SuperLink**" on the desktop.



4.7.7 Plug the U232-006 Cable into the PC's USB Port. The "**Found New Hardware Wizard**" will help you to install the driver. Select "**Install the software automatically [Recommended]**" and click "**Next**" to continue.



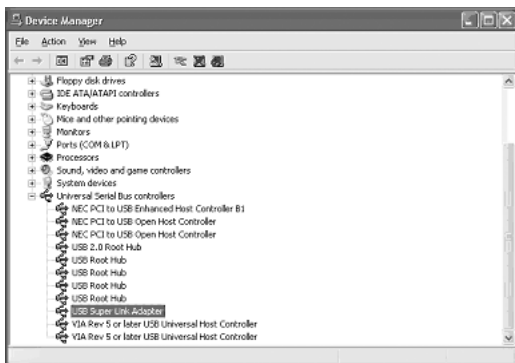
4.7.8 Windows® will display the following warning message. Press "**Continue Anyway**" to go on with this installation.



4.7.9 Click on "**Finish**" to complete this installation.



4.7.10 Plug the U232-006 Cable into USB Port of PC. You will find a new item "USB SuperLink Adapter" at "Universal Serial Bus controllers" of "Device Manager".

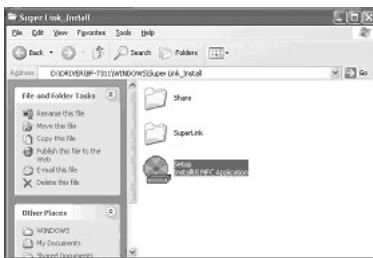


4.8 Windows® XP Driver Uninstallation

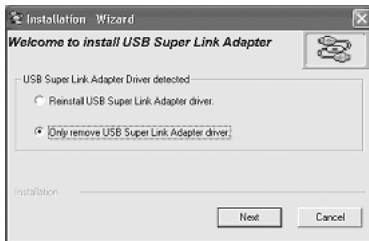
Perform the following uninstall procedure if you don't want to use this cable and want to delete this driver from the PC.

Note: Before you perform the uninstall procedure, make sure that the U232-006 Cable has been disconnected from your PC.

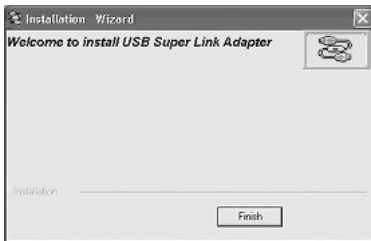
4.8.1 Point to path "D:\DRIVER\BF-7311\WINDOWS\Super Link_Install" and double click on "Setup.exe".



4.8.2 Select "Only remove USB Link Adapter driver", and then click "Next" to continue.



4.8.3 Click **"Finish"** to complete this uninstall procedure.



5. Running the SuperLink Application Program (PC-to-PC File Transfer)

5.1 Windows 98, ME, Windows 2000 & Windows XP

Follow the steps below to run the SuperLink application program.

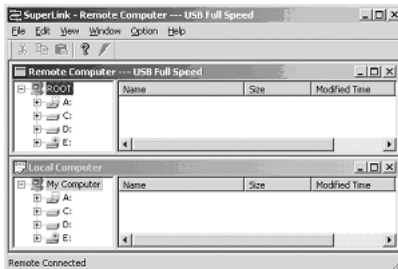
While the following procedure is based on Windows® 2000, the steps for the other OS are the same:

5.1.1 Ensure that the drivers have been installed on both computers (see previous section). Connect the U232-006 cable to both PCs.

5.1.2 Double click on the **"SuperLink"** icon on the desktop of PC#1 and PC#2. The following will be displayed. **"Connecting"** will appear at the bottom of left hand corner of the display to indicate that the PC is connecting to the remote PC.



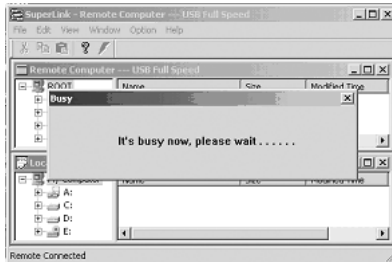
5.1.3 Once both computers have connected, **"Remote Connected"** will be displayed at the bottom left corner of the display.



5.1.4 You can cut, copy, paste, or drag files and folders between two computers just like Windows® Explorer file manager.



5.1.5 Remote site will display "It's busy now, please wait"



6. Using USB Networking (Ethernet Emulation)

6.1 Windows® 98, Windows® ME, Windows® 2000, Windows® XP Driver Installation

Select the path "D:\DRIVER\BF-7311\WINDOWS\Virtual Network_Install" (D: represents CD-ROM) and click twice on "setup.exe" to install driver.

Attention: Do not plug the U232-006 Cable into the PC's USB Port when installing the driver.

6.2 Use USB Networking

After the driver is successfully installed, plug the U232-006 Cable into your PC. Windows® will then install the Network driver for this device after which you may treat this device as an Ethernet Adapter when using it.

7. FAQ

Q: What if U232-006 Cable can't be successfully installed?

A: If your USB 2.0 PCI Card uses the Orangemicro driver, then download version 2.0.9 (used at Windows 98, ME, 2000 & XP) from the Orangemicro Web site (www.orangemicro.com).

If your USB 2.0 PCI Card uses the Microsoft driver then download version 5.1.2600 (used at Windows 2000 & XP) from Microsoft Web site.

Q: How do I know if two PCs are successfully connected?

A: The bottom of the screen will show "**Remote Connected**" at both computers.

Q: Should I un-install the driver each time I disconnect the cable?

A: You don't have to un-install the driver when you disconnect the cable unless you don't want to use this cable any more. If the cable will not be used again then you could un-install it and remove the driver from your PC.

Q: Can I connect 3 PCs to form a USB Network?

A: Yes. Connect Cable #1 from PC1 to PC2. Connect Cable #2 from PC2 to PC3. If you want to connect PC4 to this USB Network then connect Cable #3 to PC3 to PC4.

Connect PC5, PC6... to this USB Network in the similar way.

8. Warranty

1-Year Limited Warranty

TRIPP LITE warrants its products to be free from defects in materials and workmanship for a period of one (1) year from the date of initial purchase. TRIPP LITE's obligation under this warranty is limited to repairing or replacing (at its sole option) any such defective products. To obtain service under this warranty, you must obtain a Returned Material Authorization (RMA) number from TRIPP LITE or an authorized TRIPP LITE service center. Products must be returned to TRIPP LITE or an authorized TRIPP LITE service center with transportation charges prepaid and must be accompanied by a brief description of the problem encountered and proof of date and place of purchase. This warranty does not apply to equipment, which has been damaged by accident, negligence or misapplication or has been altered or modified in any way.

EXCEPT AS PROVIDED HEREIN, TRIPP LITE MAKES NO WARRANTIES, EXPRESS OR IMPLIED, INCLUDING WARRANTIES OF MERCHANTABILITY AND FITNESS FOR A PARTICULAR PURPOSE. Some states do not permit limitation or exclusion of implied warranties; therefore, the aforesaid limitation(s) or exclusion(s) may not apply to the purchaser.

EXCEPT AS PROVIDED ABOVE, IN NO EVENT WILL TRIPP LITE BE LIABLE FOR DIRECT, INDIRECT, SPECIAL, INCIDENTAL OR CONSEQUENTIAL DAMAGES ARISING OUT OF THE USE OF THIS PRODUCT, EVEN IF ADVISED OF THE POSSIBILITY OF SUCH DAMAGE. Specifically, TRIPP LITE is not liable for any costs, such as lost profits or revenue, loss of equipment, loss of use of equipment, loss of software, loss of data, costs of substitutes, claims by third parties, or otherwise.

FCC Radio / TV Interference Notice

Note: This equipment has been tested and found to comply with the limits for a Class B digital device, pursuant to Part 15 of the FCC Rules. These limits are designed to provide reasonable protection against harmful interference in a residential installation. This equipment generates, uses and can radiate radio frequency energy, and if not installed and used in accordance with the instruction manual, may cause interference to radio communications. However, there is no guarantee that interference will not occur in a particular installation. If this equipment does cause harmful interference to radio or television reception, which can be determined by turning the equipment off and on, the user is encouraged to try to correct the interference by one or more of the following measures: reorient or relocate the receiving antenna; increase the separation between the equipment and receiver; connect the equipment into an outlet on a circuit different from that which the receiver is connected; consult the dealer or an experienced radio/television technician for help. The user must use shielded cables and connectors with this product. Any changes or modifications to this product not expressly approved by the party responsible for compliance could void the user's authority to operate the equipment.