

Instruction Sheet

Connecting to Multiple Networks Simultaneously (Multihoming)

Model: U336-002-GB

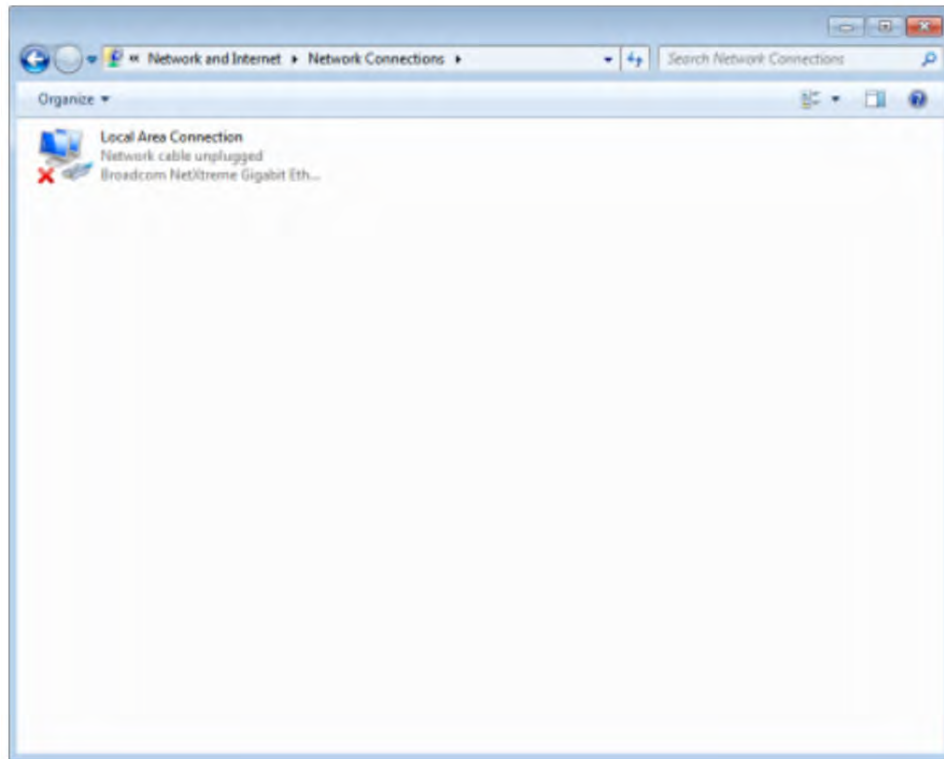


1111 W. 35th Street, Chicago, IL 60609 USA • www.tripplite.com/support

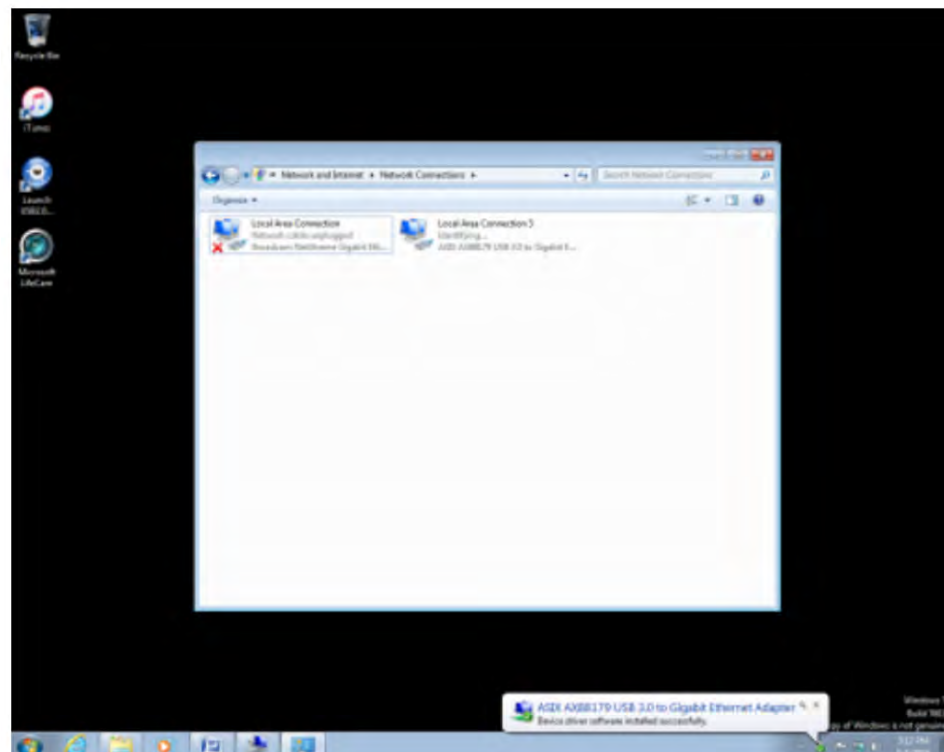
Copyright © 2017 Tripp Lite. All rights reserved.

The U336-002-GB supports the ability to connect a single computer to two separate networks. This is a function known as multihoming, which allows a computer or network a presence on more than one network.

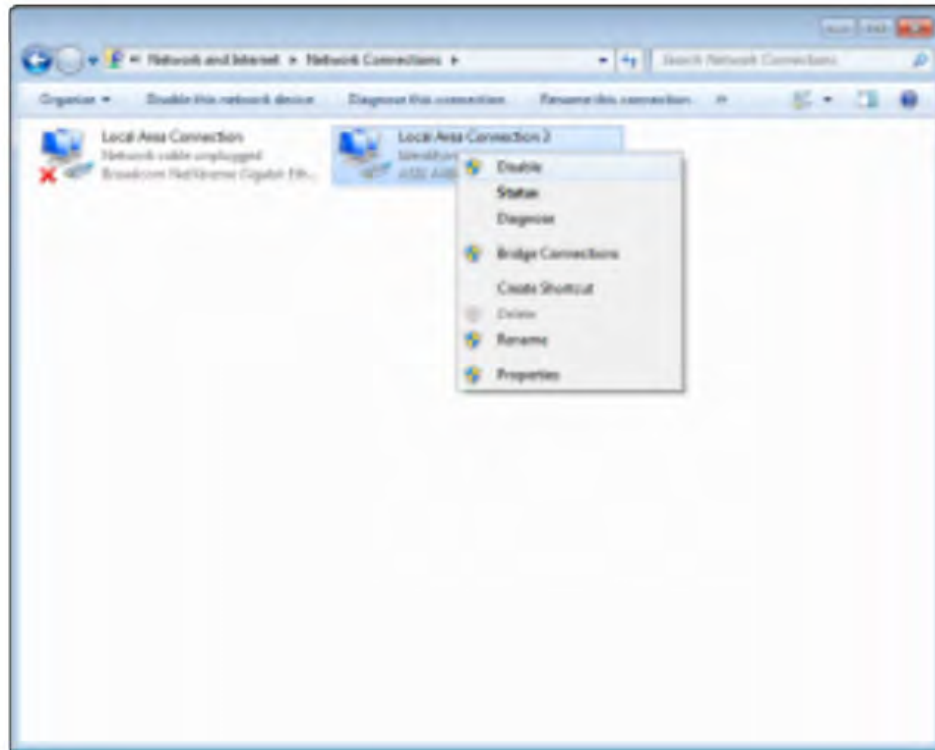
For reference purposes, below is a screenshot of the Network Connections screen on a computer that has the U336-002-GB driver installed and hardware connected and configured. Follow the included instructions for installing the U336-002-GB driver and connecting the U336-002-GB device.



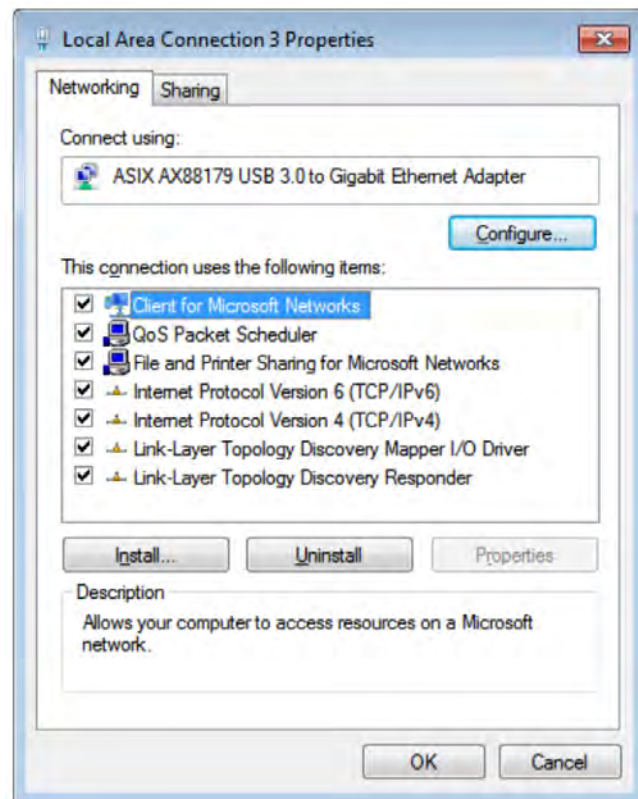
Once the installation is complete and the device connected, go to Control Panel and select Change Adapter Settings.



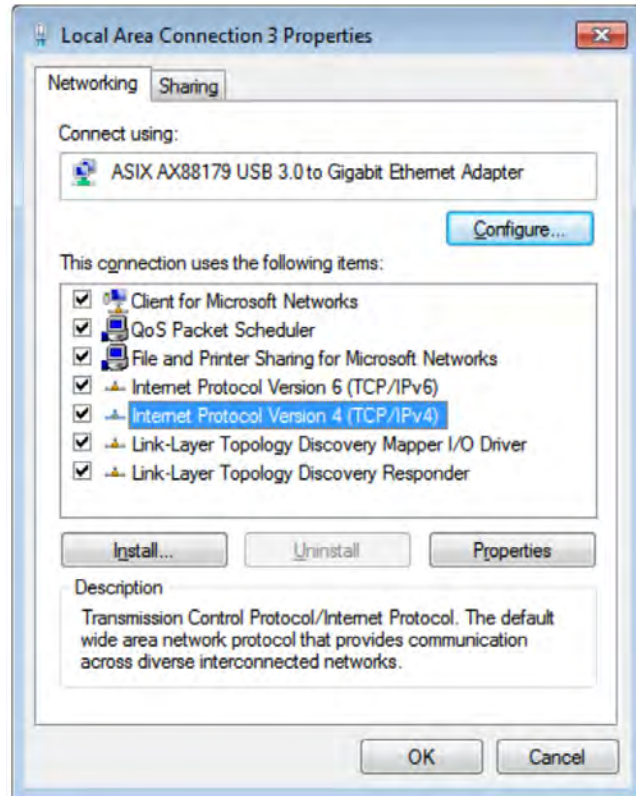
Right-click on the new Network Connection entry and select Properties.



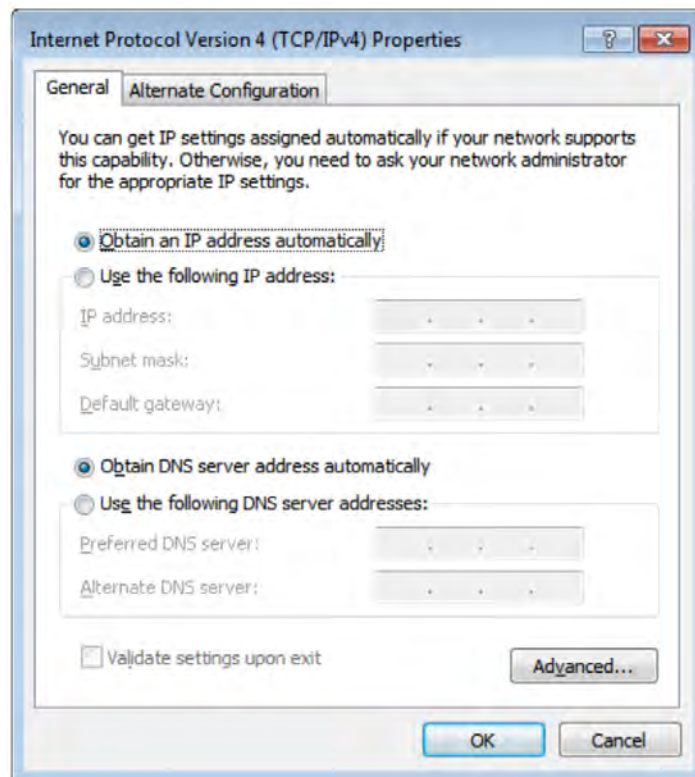
This will open the Local Area Connection X Properties window.



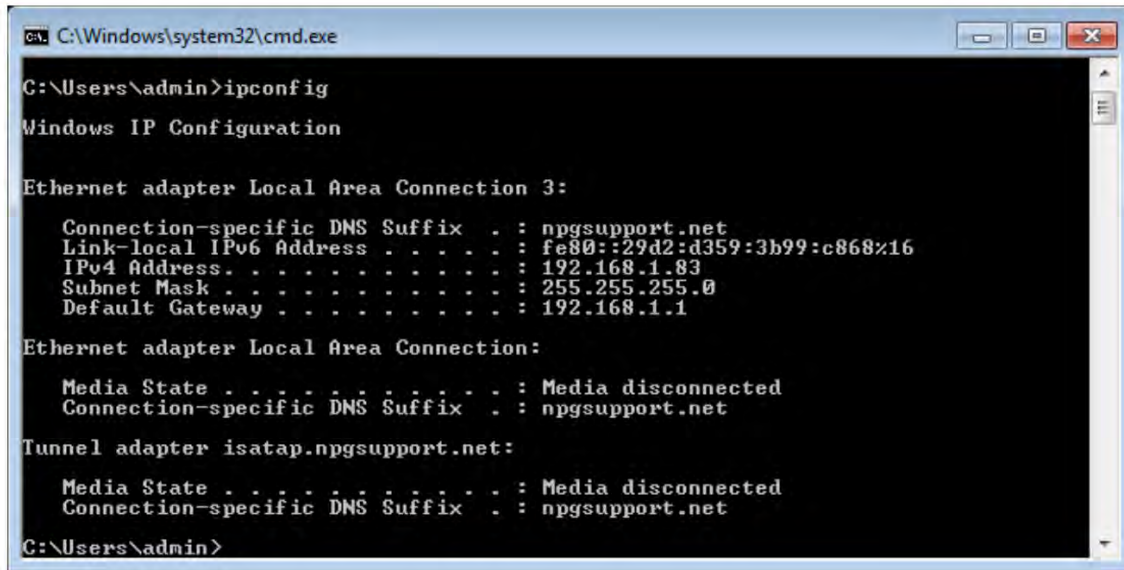
Select Internet Protocol Version 4 (TCP/IPv4) and click Properties.



This will open the Internet Protocol Version 4 (TCP/IPv4) Properties window.



Before proceeding, please note that this functionality is only possible with static IP address assignments. Obtain an available IP address for each network the device will be connecting to. In cases where DHCP is initially utilized for IP address assignment, utilizing the assigned IP address as a static IP address is an option. This may be obtained by opening a Command Prompt and utilizing IPCONFIG to determine the IP address, along with other information pertinent to this setup.



```
C:\Windows\system32\cmd.exe
C:\Users\admin>ipconfig

Windows IP Configuration

Ethernet adapter Local Area Connection 3:

    Connection-specific DNS Suffix  . : npgsupport.net
    Link-local IPv6 Address . . . . . : fe80::29d2:d359:3b99:c868%16
    IPv4 Address. . . . . : 192.168.1.83
    Subnet Mask . . . . . : 255.255.255.0
    Default Gateway . . . . . : 192.168.1.1

Ethernet adapter Local Area Connection:

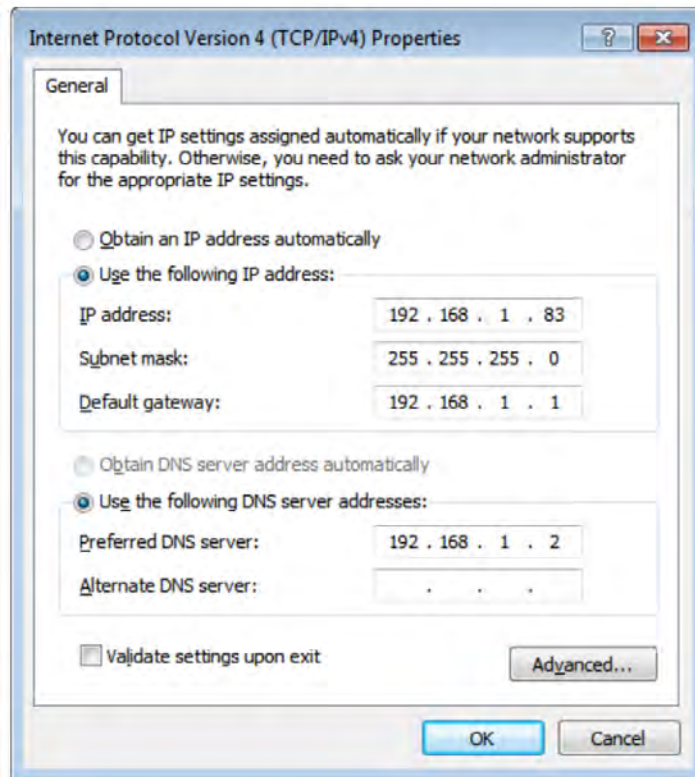
    Media State . . . . . : Media disconnected
    Connection-specific DNS Suffix  . : npgsupport.net

Tunnel adapter isatap.npgsupport.net:

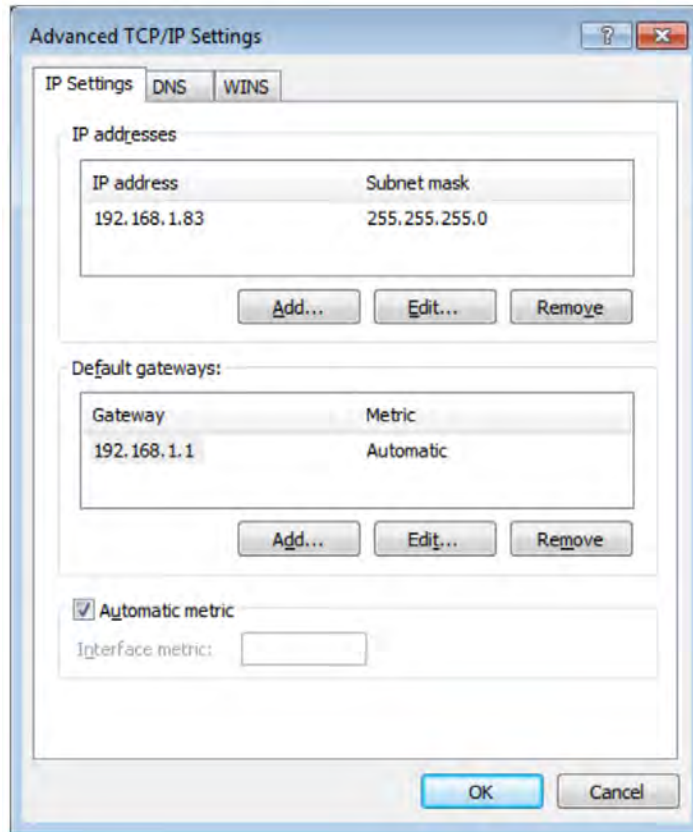
    Media State . . . . . : Media disconnected
    Connection-specific DNS Suffix  . : npgsupport.net

C:\Users\admin>
```

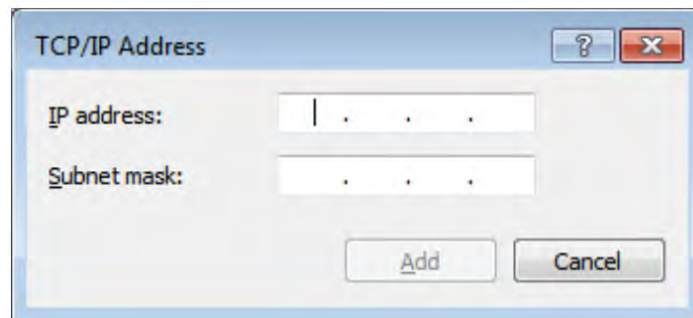
Under the General tab, designate the IP address, Subnet mask, Default gateway and DNS server for the first (primary) network the device will be connecting to. When complete, click the Advanced button.



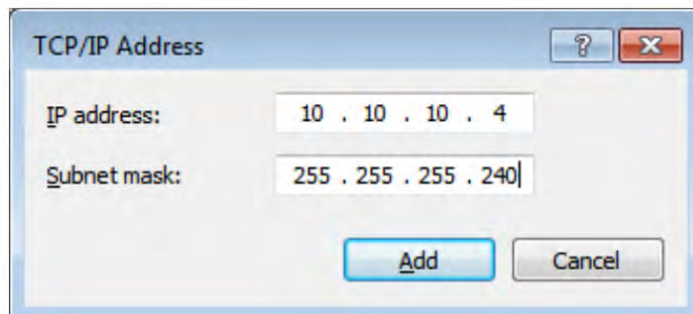
This will open the Advanced TCP/IP Settings window. The IP address that was initially added will be visible. Click the Add button.



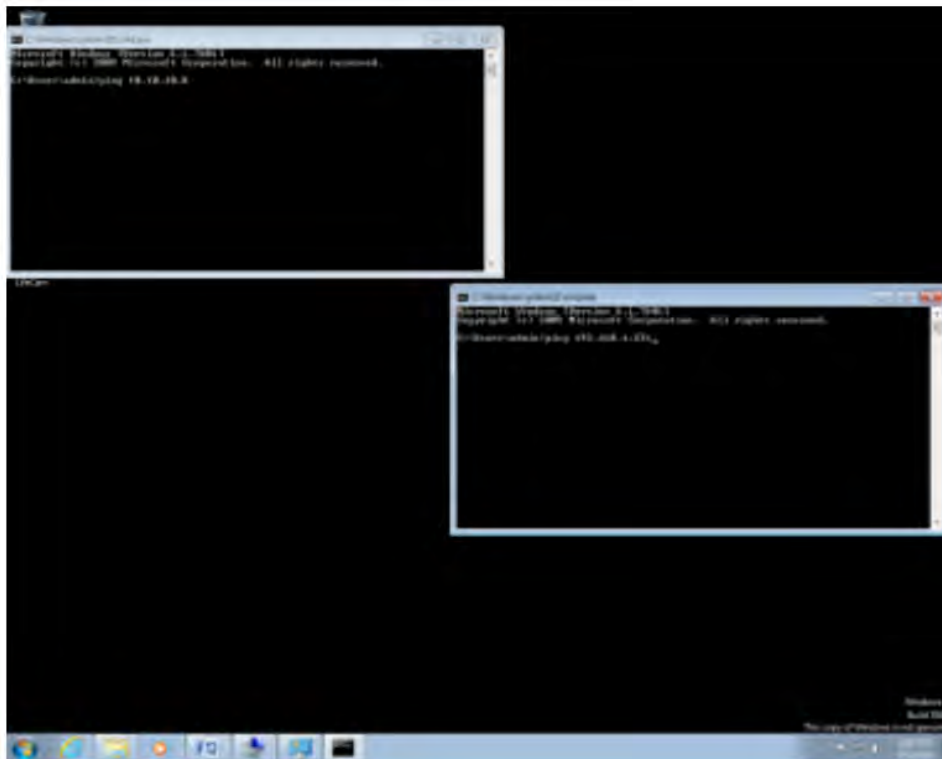
This will open the window for additional entries.



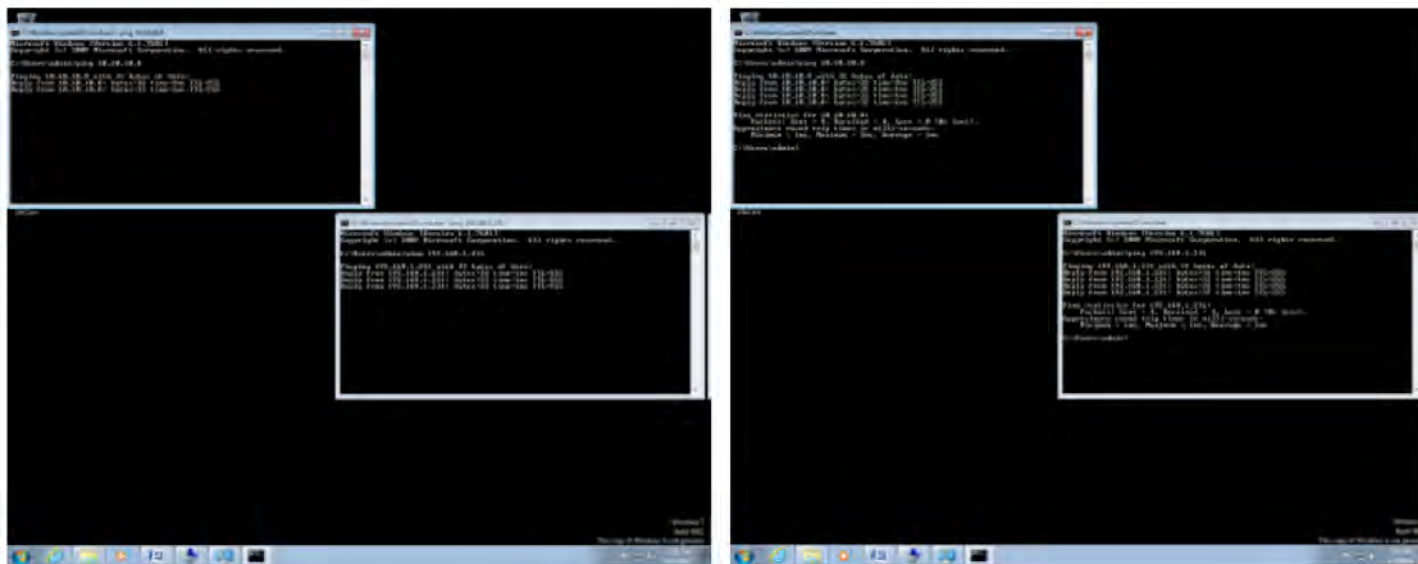
Add the second IP address and Subnet mask for the second network that the device will be connecting to. Click on Add, then click on Apply/OK/Close to close all windows associated with this configuration.



Open two Command Prompt windows and begin a ping to a known available device on each of the networks the U336-002-GB is connected to.



If the network settings have been configured properly, pings on both network devices should be successful.



If the pings are unsuccessful, evaluate the settings for miskeyed information. Ensure an IP address that is currently in use has not been applied to either of the network connections.



1111 W. 35th Street, Chicago, IL 60609 USA • www.tripplite.com/support