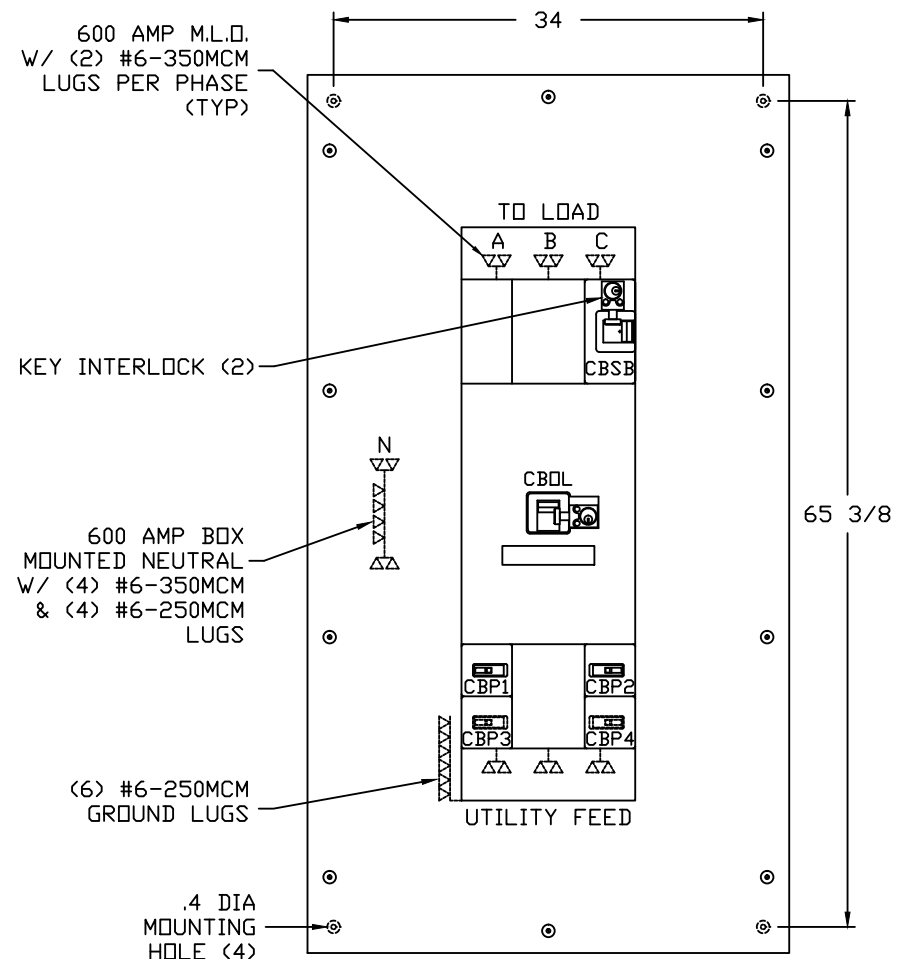


LEFT SIDE VIEW

FRONT VIEW



FRONT VIEW
DOOR REMOVED

PARALLEL CABINET WITH SYSTEM MAINTENANCE BYPASS



TRIPP-LITE POWER PROTECTION

1111 WEST 35TH STREET • CHICAGO ILLINOIS 60609 • 773-869-1600 • FAX 773-869-1625

1	REVISED NEUTRAL & GROUND BARS, RELOCATED TRIPP-LITE LOGO (RSH)	07-21-2011	JOB: TRIPP LITE POWER PROTECTION, CHICAGO, ILLINOIS
			CONTR.:
			DISTR.:
		DATE: 07-19-2011	DRAWN BY: RH
		C.O.#:	S.O.#:
	REVISIONS	DATE	CAD NO.: TLP2MBP600A01
			DRAWING NO.: 113275

PARALLEL CABINET WITH SYSTEM MAINTENANCE BYPASS (PCSMB)

MUS	SYSTEM OUTPUT	TYPE*	CABINET DESIGNATOR	STOCK NUMBER	ASSEMBLY NUMBER	DESIGN VOLTAGE	CBOL & CBSB		CBP1		CBP2		CBP3		CBP4		O/P BUS RATING (AMPS)	UPS QTY
							SIZE	FRAME (C-H)	SIZE	FRAME (C-H)	SIZE	FRAME (C-H)	SIZE	FRAME (C-H)	SIZE	FRAME (C-H)		
2x60K	120KVA	C	SUPC2MBP60K	AC8222	550189	208	450AT/600AF	LD3450	225AT/225AF	ED3225	225AT/225AF	ED3225	---	---	---	---	600	2
2x80K	160KVA	C	SUPC2MBP80K	AC8221	550188	208	600AT/600AF	LD3600	300AT/400AF	KD3300	300AT/400AF	KD3300	---	---	---	---	600	2
3x80K	240KVA	C	SUPC3MBP80KX			380/400/415	450AT/600AF	LD3450	150AT/225AF	FD3150	150AT/225AF	FD3150	150AT/225AF	FD3150	---	---	600	3
4x60K	240KVA	C	SUPC4MBP60KX			380/400/415	450AT/600AF	LD3450	125AT/225AF	FD3125	125AT/225AF	FD3125	125AT/225AF	FD3125	125AT/225AF	FD3125	600	4
4x80K	320KVA	C	SUPC4MBP80KX	AC8519	550187	380/400/415	600AT/600AF	LD3600	150AT/225AF	FD3150	150AT/225AF	FD3150	150AT/225AF	FD3150	150AT/225AF	FD3150	600	4
4x80K	240KVA	R	SUPR4MBP80KX			380/400/415	450AT/600AF	LD3450	150AT/225AF	FD3150	150AT/225AF	FD3150	150AT/225AF	FD3150	150AT/225AF	FD3150	600	4

*NOTES
 R N+1 REDUNDANT MUS
 C CAPACITY MUS

CABINET DESIGNATOR	STOCK NUMBER	ASSEMBLY NUMBER	KAIC @ RATED VOLTS			ENCL DIMS (IN) & WEIGHT (LBS)				SHIPPING DIMS (IN) & WEIGHT (LBS)			
			@ RATED VOLTS	CBOL & CBSB	CBPn	HEIGHT	WIDTH	DEPTH	TOTAL WEIGHT	HEIGHT	WIDTH	DEPTH	TOTAL WEIGHT
SUPC2MBP60K	AC8222	550189	240	65	65	69.50	38.13	11.80	485	70.25	38.88	12.50	490
SUPC2MBP80K	AC8221	550188	240	65	60	69.50	38.13	11.80	485	70.25	38.88	12.50	490
SUPC3MBP80KX			480	35	35	69.50	38.13	11.80	485	70.25	38.88	12.50	490
SUPC4MBP60KX			480	35	35	69.50	38.13	11.80	485	70.25	38.88	12.50	490
SUPC4MBP80KX	AC8519	550187	480	35	35	69.50	38.13	11.80	485	70.25	38.88	12.50	490
SUPR4MBP80KX			480	35	35	69.50	38.13	11.80	485	70.25	38.88	12.50	490

KINNEY PANEL TYPE: CDP (UL 67 LISTED INTERIOR)
SERVICE: SEE TABLE ABOVE.
ALTERNATE VOLTAGES: 208V, 380/400/415V.
ALTERNATE VOLTAGE STICKERS: PROVIDE STICKERS WITH ALTERNATE VOLTAGES TO BE APPLIED IN FIELD AS REQUIRED. STICKERS INCLUDED IN BAG WITH KEYS.
ENCLOSURE: NEMA 1 (UL 50 LISTED ENCLOSURE)
BOX: 12 GAUGE PAINTED STEEL, NO KNOCKOUTS.
TRIM: 12 GAUGE PAINTED STEEL, HELD TO BOX WITH ADJUSTABLE TRIM CLAMPS - SURFACE MOUNTING.
DOOR: EQUIPPED WITH CORBIN 15767 SNAPLOCK.
FINISH: GRAY POLYESTER POWDERCOAT APPLIED TO SURFACES TREATED WITH AN IRON PHOSPHATE AND CHROME FREE SEALER.
BUS: ELECTROLYTIC COPPER OF 98% CONDUCTIVITY, BASED ON 1000 AMPS PER SQUARE INCH DENSITY.
WIRE BENDING GUTTER: MEETS OR EXCEEDS NEC TABLES 312-6(a), 312-6(b).
BREAKERS: CUTLER-HAMMER THERMAL-MAGNETIC, 3 POLE, AS INDICATED; SEE TABLE ABOVE FOR BREAKER TYPE, AMPERES, AND A. I. C. RATING.
BREAKER TERMINAL LUG: (2) 3/0-350MCM PER PHASE.
KEY INTERLOCK: KIRK TYPE F, CBSB LOCKED IN THE OPEN POSITION. CBOL LOCKED IN THE CLOSED POSITION.

SHIPPING NOTE: TRIPP-LITE STOCK NUMBER TO BE MARKED ON PACKAGING.

SHEET 2 OF 3



TRIPP • LITE POWER PROTECTION

1111 WEST 35TH STREET • CHICAGO ILLINOIS 60609 • 773-869-1600 • FAX 773-869-1625

1	REVISED TABLES & ADDED NOTES (RSH)		JOB: TRIPP LITE POWER PROTECTION, CHICAGO, ILLINOIS
			CONTR.:
			DISTR.:
		DATE: 07-19-2011	DRAWN BY: RH
		C.O.#:	S.O.#:
	REVISIONS	DATE	CAD NO.: TLP2MBP600A01
			DRAWING NO.: 113275

CABINET SYSTEM SCHEMATIC

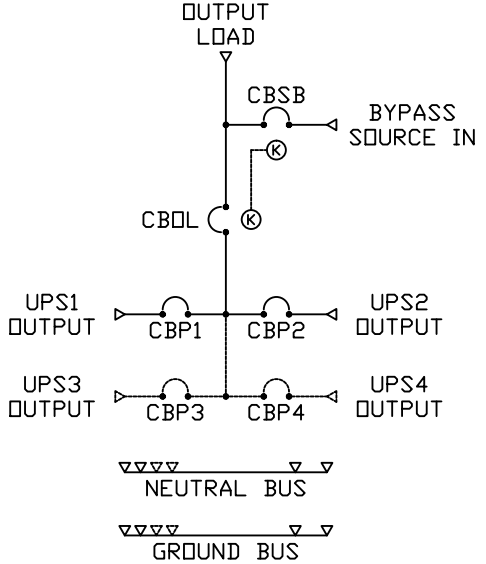
PCSMB SEQUENCE OF OPERATION

TO ISOLATE UPS OUTPUTS FROM BUS:

- 1) PUT ALL UPS INTO STATIC BYPASS BY TURNING OFF THEIR INVERTERS. (SEE OWNERS MANUAL FOR PROPER PROCEDURE).
- 2) CBSB - RETRACT KIRK KEY BOLT, REMOVE KEY AND CLOSE CBSB.
- 3) CBOL - USE KEY TO UNLOCK AND RETRACT BOLT THEN OPEN CBOL. (ALL UPS OUTPUTS CAN NOW BE ISOLATED).
- 4) OPEN UPS OUTPUT BREAKERS TO ISOLATE FROM OUTPUT BUS.

TO RECONNECT UPS OUTPUTS TO BUS:

- 1) VERIFY ALL UPS ARE IN STATIC BYPASS WITH THEIR INVERTERS OFF (SEE OWNERS MANUAL FOR PROPER PROCEDURE).
- 2) CLOSE UPS OUTPUT BREAKERS TO CONNECT TO OUTPUT BUS.
- 3) CBOL - RETRACT KIRK KEY BOLT, REMOVE KEY AND CLOSE CBOL. (ALL UPS OUTPUTS ARE CONNECTED TO OUTPUT BUS).
- 4) CBSB - USE KEY TO UNLOCK AND RETRACT BOLT THEN OPEN CBSB.
- 5) SEQUENCE ALL UPS TO FULL ON-LINE MODE.



TRIPP • LITE POWER PROTECTION

1111 WEST 35TH STREET • CHICAGO ILLINOIS 60609 • 773-869-1600 • FAX 773-869-1625

		JOB: TRIPP LITE POWER PROTECTION, CHICAGO, ILLINOIS	
		CONTR.:	
		DISTR.:	
		DATE: 07-19-2011	DRAWN BY: RH
		C.O.#:	S.O.#:
REVISIONS	DATE	CAD NO.: TLP2MBP600A01	DRAWING NO.: 113275