

Quick Start Guide

Console KVM Switch with IP Access

Model: B030-008-17-IP

WARRANTY REGISTRATION

Register your product today and be automatically entered to win an ISOBAR surge protector in our monthly drawing!

tripplite.com/warranty



1111 W. 35th Street, Chicago, IL 60609 USA • tripplite.com/support

Copyright © 2020 Tripp Lite. All rights reserved.

1. Important Safety Instructions

1.1 General Safety Instructions

- Read all of these instructions and save them for future reference.
- Follow all warnings and instructions marked on the device.
- Do not place the device on any unstable surface. If the device falls, serious damage will result.
- Do not use the device near water.
- Do not place the device near or over, radiators or heat registers.
- The device cabinet is provided with slots and openings to allow for adequate ventilation. To ensure reliable operation and protect against overheating, these openings should never be blocked or covered.
- The device should never be placed on a soft surface such as a bed, sofa or rug. Doing so will block the device's ventilation openings. Moreover, the device should not be placed in a built-in enclosure unless adequate ventilation has been provided.
- Never spill liquid of any type on the device.
- Unplug the device from the wall outlet before cleaning. Use a damp cloth for cleaning. Do not use liquid or aerosol cleaners.
- The device should be operated from the power source indicated on the marking label. If uncertain of the power available, consult your dealer or local power company.
- The device is designed for IT power distribution systems up to 230V phase-to-phase voltage.
- As an added safety feature, the device is equipped with a 3-wire grounding type plug. If unable to insert the plug into the outlet, contact an electrician to replace the obsolete outlet. Do not attempt to plug into a two-prong ungrounded outlet. Always follow local/national wiring codes.
- Do not allow anything to rest on the power cord or cables. Route the power cord and cables to avoid them being stepped on or tripped over.
- If an extension cord is used with this device, ensure the total ampere ratings of all products used on the extension cord do not exceed its rated ampere rating. Also ensure all products plugged into the wall outlet does not exceed a total of 15 amperes.
- Consideration should be given to the connection of equipment and the supply circuit, as well as what effect overloading the supply circuit might have on overcurrent protection and supply wiring.
- To help protect the system from unexpected transient increases and decreases in electrical power, use a Tripp Lite Surge Protector, Line Conditioner, or Uninterruptible Power Supply (UPS).
- Position system cables and power cables carefully so nothing rests on any cables.
- When connecting or disconnecting power to hot pluggable power supplies, observe the following guidelines:
 - Install the power supply before connecting the power cable to the power supply.
 - Unplug the power cable before removing the power supply.
 - If the system has multiple sources of power, disconnect power from the system by unplugging all power cables from the power supplies.
- Never push objects of any kind into or through cabinet slots. They may touch dangerous voltage points or short out parts resulting in a risk of fire or electrical shock.
- Do not attempt to service the device; refer all servicing to qualified service personnel.

1. Important Safety Instructions

- If the following conditions occur, unplug the device from the wall outlet and bring it to qualified service personnel for repair:
 - The power cord or plug has become damaged or frayed.
 - Liquid has been spilled into the device.
 - The device has been exposed to rain or water.
 - The device has been dropped, or the cabinet has been damaged.
 - The device exhibits a distinct change in performance, indicating a need for service.
 - The device does not operate normally when the operating instructions are followed.
- Only adjust controls covered in the operating instructions. Improper adjustment of other controls may result in damage that will require extensive work by a qualified technician to repair.
- Use of this equipment in life support applications where failure of this equipment can reasonably be expected to cause the failure of the life support equipment or to significantly affect its safety or effectiveness is not recommended. Do not use this equipment in the presence of a flammable anesthetic mixture with air, oxygen or nitrous oxide.

1.2 Rack-Mounting Safety Instructions

- The ambient operating temperature in the rack may be an issue and is dependent upon the rack load and ventilation. When installing in a closed or multi-device rack assembly, ensure the temperature will not exceed the maximum rated ambient temperature.
- Before installing the rack, ensure the stabilizers are secured to the rack, extended to the floor and the full weight of the rack rests on the floor. Install front and side stabilizers on a single rack or front stabilizers for joined multiple racks before working on the rack.
- Always load the rack from the bottom up with the heaviest item loaded into the rack first.
- When loading the rack, avoid creating a hazardous condition due to uneven loading.
- Ensure the rack is level and stable before extending a device from the rack.
- Use caution when pressing the rail release latches or sliding a device into or out of a rack; slide rails can pinch your fingers.
- After a device is inserted into the rack, carefully extend the rail into a locking position, then slide the device into the rack.
- Do not overload the AC supply branch circuit that provides power to the rack. The total rack load should not exceed 80 percent of the branch circuit rating.
- Ensure that proper airflow is provided to devices in the rack.
- Do not step on or stand on any device when servicing other devices in a rack.
- Do not connect the RJ11 connector marked “Upgrade” to a public telecommunication network.
- **Caution!** Slide/Rail (LCD KVM) mounted equipment is not to be used as a shelf or work space.



CAUTION!
Slide/rail-mounted
equipment is not to be
used as a shelf
or a workspace.

2. Installation

The B030-008-17-IP is designed for mounting in a 1U rack system. For convenience, a rack-mounting kit is included for quick installation. The various mounting options are explained in the following subsections.

2.1 Standard Rack Mounting

The standard rack-mounting brackets that come attached to the console KVM switch allow the device to be installed in a standard 1U rack by a single individual.

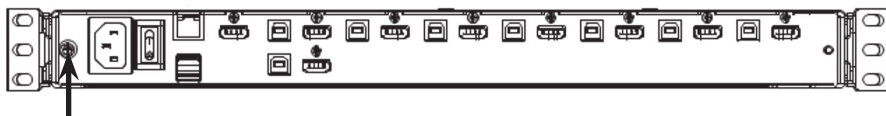
1. Slide out the rear mounting brackets from the console and mount both brackets (separate from the console) to the inside rear of a standard 1U rack system using user-supplied screws.
2. Gently slide the console into the two rear-mounted brackets in the rack and secure the console in place with user-supplied screws.

2.2 2-Post Rack Mounting

The console KVM switch can also be mounted in a 2-post rack installation using the optional 2-Post Rack Mount Kit (model #: B019-000). The mounting hardware allows for the console to be opened with the drawer in any position. Heavy-duty 14-gauge steel provides stability and prevents the console frame from twisting. See the B019-000 instructional manual for detailed mounting instructions.

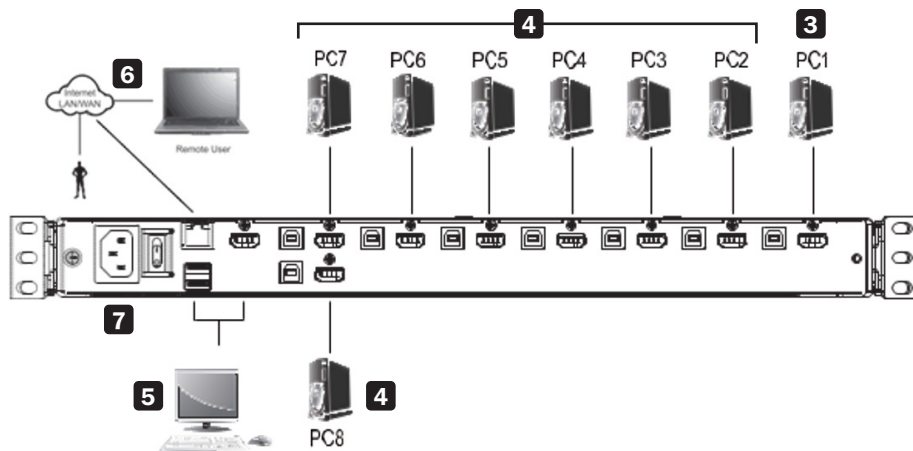
2.3 Grounding

To prevent damage to the installation, it is important that all devices are properly grounded. Use the included grounding wire to ground the KVM switch by connecting one end of the wire to the grounding terminal on the device and the other end to a suitably grounded object.



2.4 KVM Switch Installation

To set up the console KVM switch, refer to the following steps and installation diagram.



2. Installation

- 1** Power off all computers that will connect to the KVM switch.
- 2** Connect a USB cable from a USB CPU port on the KVM to the USB port on a computer.
- 3** Connect the HDMI CPU port on the KVM to the HDMI or DVI* port on a computer.
- 4** Repeat steps 2 and 3 for each additional computer you are connecting to the KVM.
- 5 (Optional)** Add an external console to the KVM by connecting an HDMI or DVI* monitor and USB keyboard and mouse to the console ports on the back of the device.
- 6** Connect the LAN port on the back of the device to the network using Cat5e/6 cable.
- 7** Plug the included power cord into a Tripp Lite Surge Protector, Power Distribution Device (PDU), Uninterruptible Power Supply (UPS) or AC wall outlet.
- 8** Power the connected computers.
- 9** Power the KVM device.

*Using an HDMI to DVI adapter cable, such as Tripp Lite's P566-Series cables.

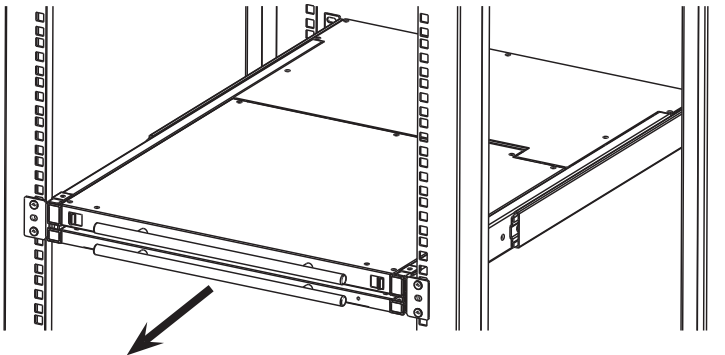
3. Basic Operation

3.1 Opening / Closing the Console

The console consists of two modules: an LCD display module located under the top cover and a keyboard / touchpad module below the LCD module. The modules can slide together or independently of one another. This allows the LCD display to be available for viewing while the keyboard / touchpad module is not in use.

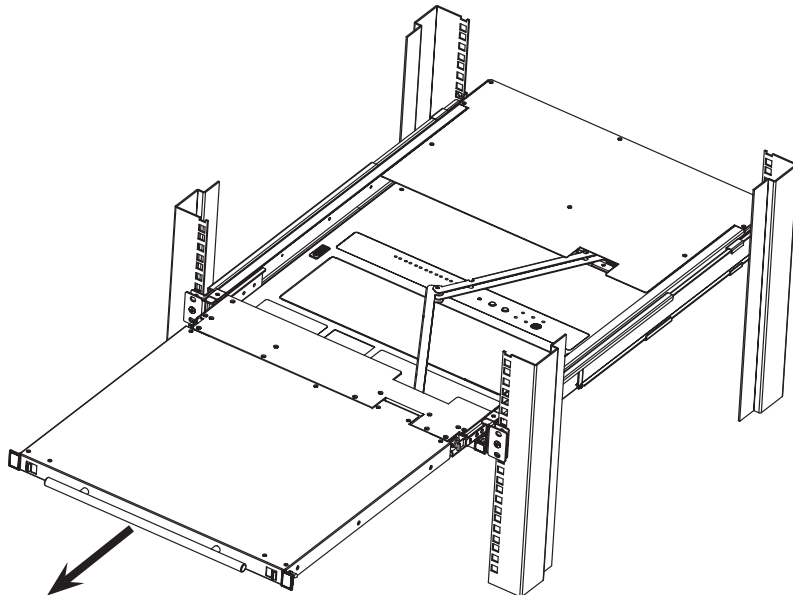
3.1.1 Opening Separately

1. Release the console by sliding the front panel toward the center. Then engage the catches and pull the top panel 1-2 inches toward you. Once the console has been released, release the catches.

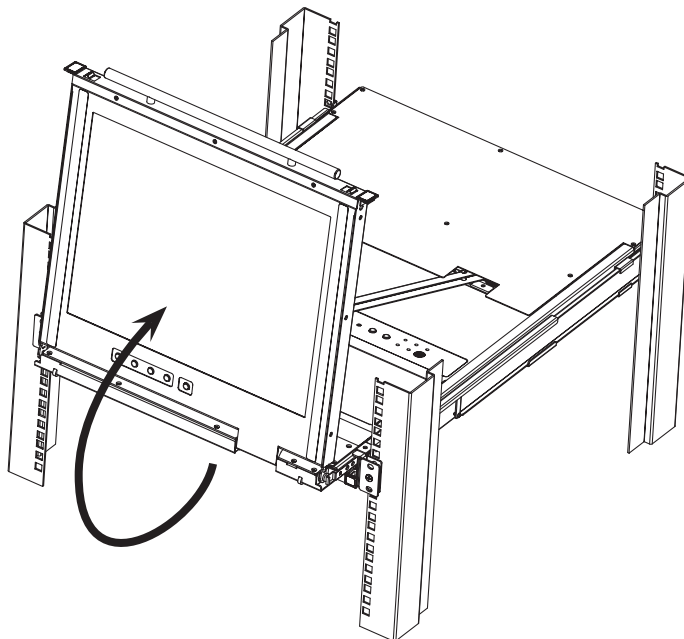


3. Basic Operation

2. Pull the top panel all the way out until it clicks into place.

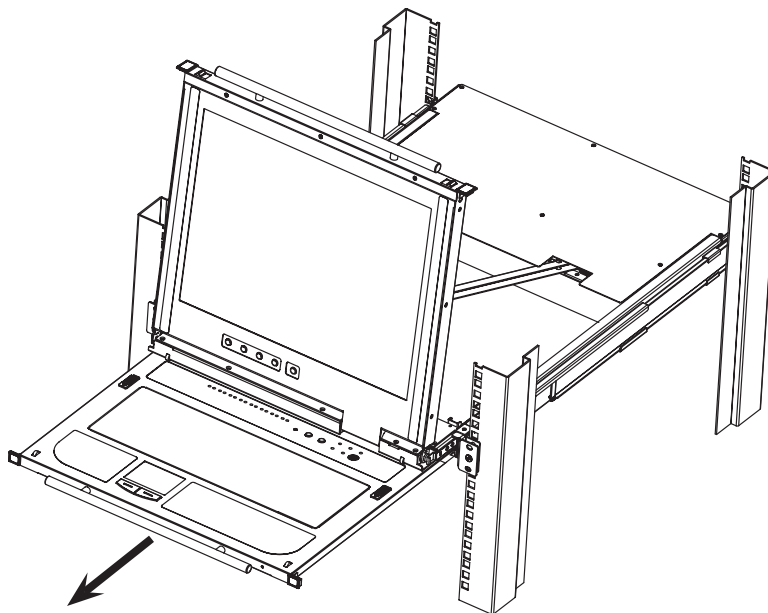


3. Rotate the top panel all the way back to expose the LCD screen.



3. Basic Operation

4. Reach underneath and pull out the keyboard module until it clicks into place.



3.1.2 Opening Together

Refer to the diagrams in the Opening Separately section as you do the following:

1. Engage the release catches and pull the top and bottom panels out until the keyboard module clicks into place. Once the console has been released, release the catches.
2. Pull the top panel out until it clicks into place.
3. Rotate the top panel all the way back to expose the LCD screen.

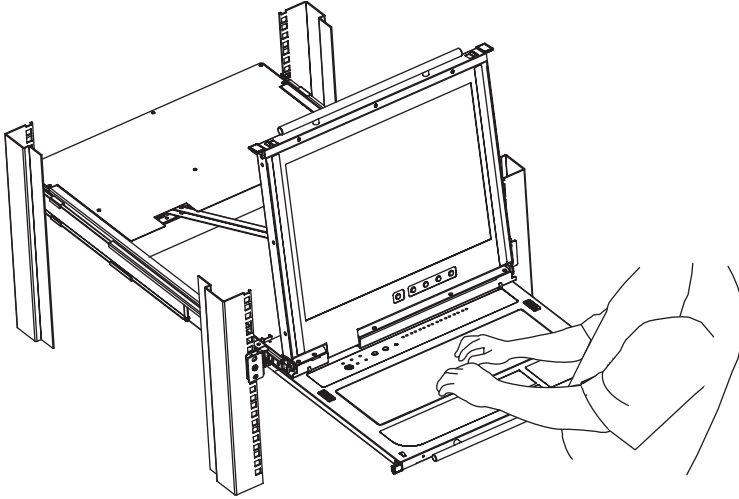
3. Basic Operation

3.1.3 Opening Precautions

The maximum load bearing capacity of the keyboard module is 65 lb. Failure to heed the instructions below can result in damage to the keyboard module.

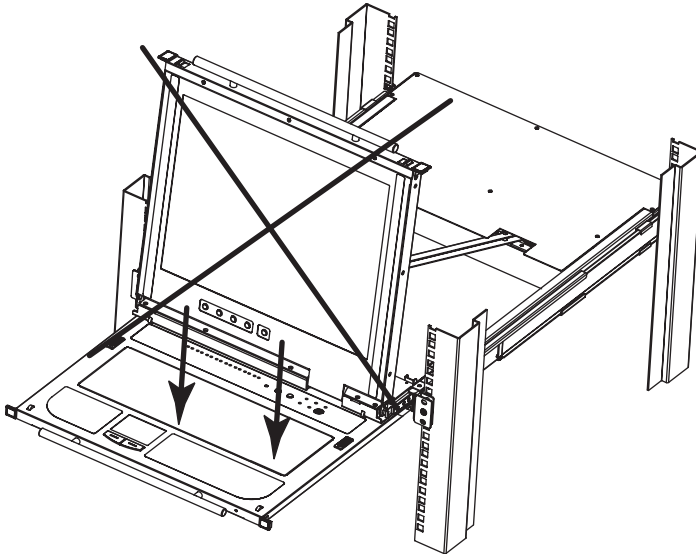
CORRECT

Rest your hands and arms lightly on the keyboard module as you work.



INCORRECT!

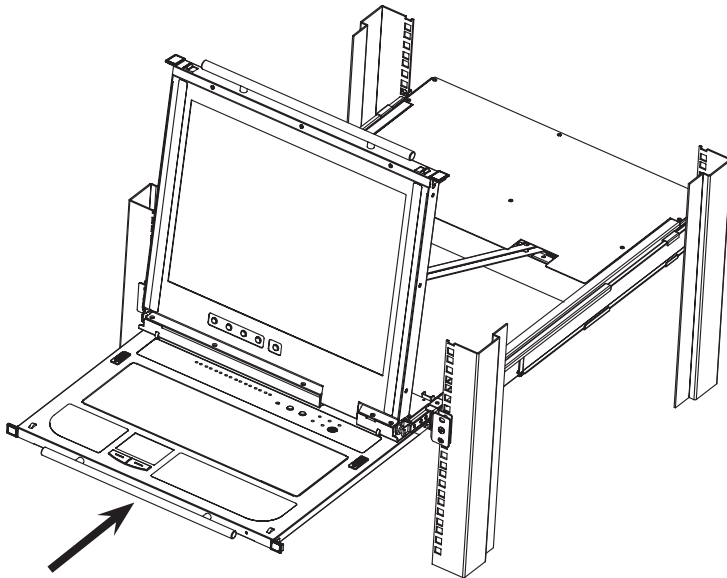
- DO NOT apply body weight on the keyboard module.
- DO NOT place heavy objects on the keyboard module.



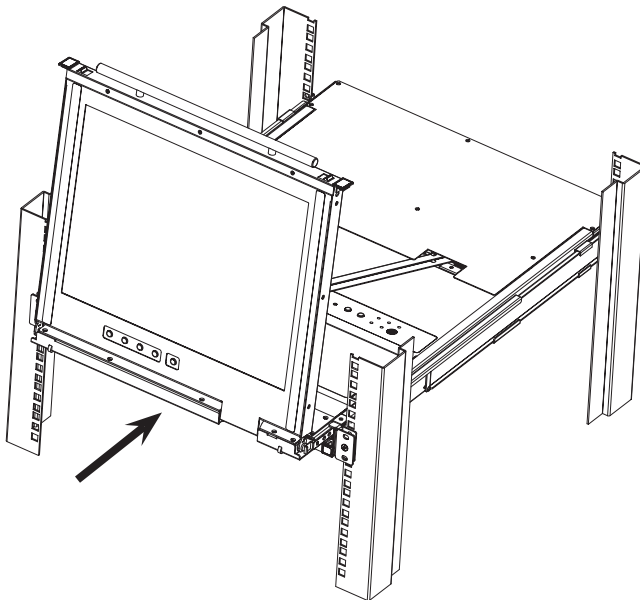
3. Basic Operation

3.1.4 Closing the Console

1. Engage the release catches located on either side of the keyboard to release the keyboard module, then slide in the module slightly.

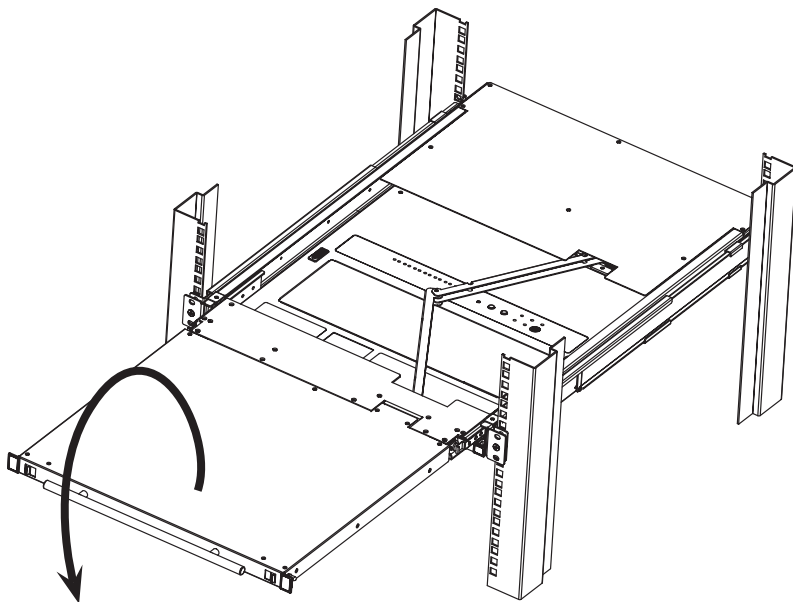


2. Release the catches. Using the front handle, push the keyboard module all the way in.

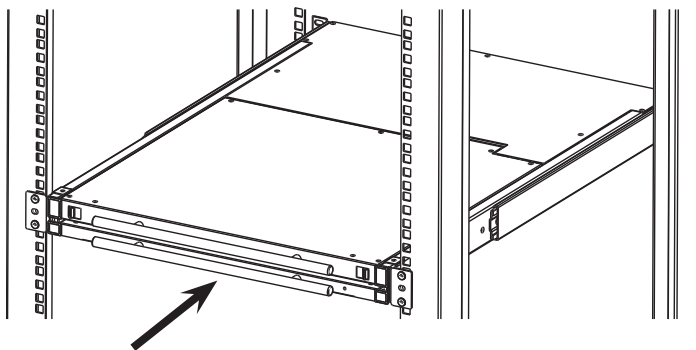


3. Basic Operation

3. Rotate the LCD module all the way down, then engage the rear catches to release the LCD module.



4. Using the front handle, push the module all the way in.



4. Network Setup

4.1 IP Address Configuration

By default, the KVM will automatically have an IP address assigned via DHCP server. To configure a fixed IP address, you will need to access the KVM switch in one of three ways: Local Console, IP Installer or Browser.

4.1.1 Local Console

Note: The local console OSD only allows IPv4 network settings configuration. For IPv6, access the Web Management Interface.

1. When accessing the console KVM switch for the first time, a prompt will appear asking for a Username and Password. The default Username is **administrator**, and the default Password is **password**. For security purposes, changing the username and password is strongly recommended. Once the default username and password are entered, the OSD Main page will appear.
2. Press the [F4] key to open the OSD ADM page.
3. In the OSD ADM page, highlight SET IP ADDRESS and press [Enter]. The following screen appears.



4. By default, the *Obtain an IP address automatically (DHCP)* option is selected. To manually assign an IP address, check the radio button next to the *Use the following IP address* option.
5. You can then navigate to the *IP Address*, *Subnet Mask* and *Default Gateway* fields by entering the settings suitable for your network. Upon changing the KVM's IP Address settings, the Reset on Exit function of the F4: ADM menu will be automatically activated. Upon logging out, the new settings will be saved for use going forward. If you go into the F4: ADM menu and clear the Reset on Exit check mark before logging out, the changed settings will be ignored and the original IP Address settings will remain in effect.

Note: Although the changed IP settings are ignored, they still remain in the network settings fields. The next time a page is opened, the Reset on Exit box will automatically be enabled. When the switch resets, the new IP settings will become the ones used by the switch. To avoid this problem, go back to the network settings page and ensure the desired IP settings appear in the fields.

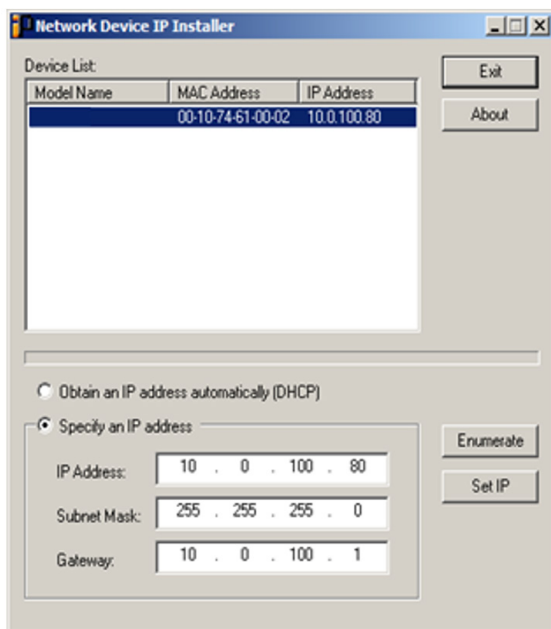
4. Network Setup

4.1.2 IP Installer

Computers running Windows can use the IP Installer utility found in the included CD-ROM to assign an IP address to the KVM.

Notes:

- The IP Installer Settings section located in the KVM's Web Management Interface network page must be enabled in order to use the IP Installer to assign an IP address. This setting is enabled by default.
 - The local console OSD only configures IPv4 network settings. For IPv6, access the Web Management Interface.
1. Save the IP Installer.exe file from the CD to a desired location on a computer that is on the same network as the KVM switch.
 2. Locate the recently saved IP Installer.exe file and double-click on its icon. A screen similar to the one below will appear.



3. The IP Installer searches the network and displays all B030-008-19-IP KVM switches found in the device list. If your device does not appear in the list, click the Enumerate button to refresh the device list. If more than one of the same KVM switch models appears in the list, locate the desired device using the MAC address found on the bottom of the console KVM. Once your device is located in the list, highlight it.
4. From here you can choose between the following two options: 1. Obtain an IP address automatically (DHCP), or 2. Specify an IP address. If you choose to assign your own address, fill in the IP Address, Subnet Mask, and Gateway fields with information appropriate to your network. Click on the Set IP button to apply the new network settings to the selected KVM switch.
5. After the new IP address shows up in the device list, click the Exit button to exit the IP Installer.

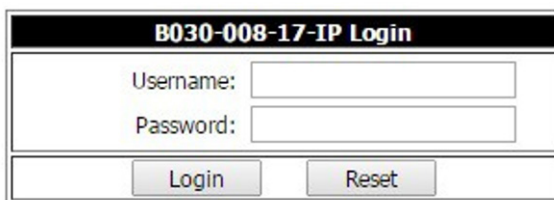
4. Network Setup

4.1.3 Browser

By default, the KVM switch will have an IP Address automatically assigned via DHCP server. If the KVM Switch is on a network that does not have a DHCP server to automatically assign an IP address, it boots with a default IP address. The default IPv4 and IPv6 addresses can be found on the sticker located on the bottom of the KVM.

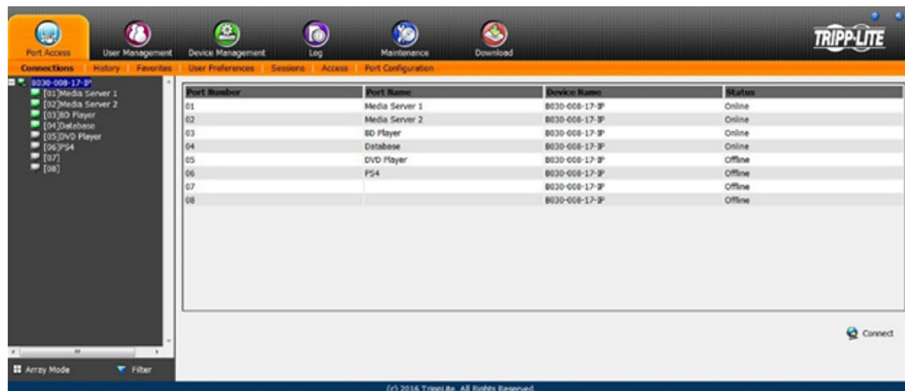
1. For a computer/server on the same network as your console KVM switch, set the computer/server's IP address to 192.168.0.XXX, where XXX represents any number or numbers **except** the KVM's default address.
2. Using this computer/server, access the KVM switch via the default address. A screen will appear asking to provide a username and password.

Note: If first prompted by a screen stating the website's security certificate cannot be trusted, click on the link to proceed anyway; the certificate can be trusted.



The login screen has a title bar "B030-008-17-IP Login". Below it are two input fields: "Username:" and "Password:". At the bottom are two buttons: "Login" and "Reset".

3. If accessing the KVM for the first time, enter the username **administrator** and the password **password**. For security purposes, changing the username and password is strongly recommended. Once the default username and password are entered, the web management interface will appear with the following page displayed:



The web management interface shows a top navigation bar with icons for Port Actions, User Management, Device Management, Log, Maintenance, and Download. Below this is a sub-navigation bar with links: Connected Devices, History, Favorites, User Preferences, Settings, Access, and Port Configuration. The main content area displays a table of connected devices.

Port Number	Port Name	Device Name	Status
01	Media Server 1	B030-008-17-3P	Online
02	Media Server 2	B030-008-17-3P	Online
03	BD Player	B030-008-17-3P	Online
04	Estimate	B030-008-17-3P	Online
05	DVD Player	B030-008-17-3P	Offline
06	PS4	B030-008-17-3P	Offline
07		B030-008-17-3P	Offline
08		B030-008-17-3P	Offline

At the bottom right, there is a "Connect" button. The footer text reads: "(C) 2016 Tripp-Lite. All Rights Reserved."

4. Network Setup

- Click on the **Device Management** icon at the top of the page, then click on the **Network** tab. The Network page will appear.

The screenshot shows the Network Setup page with the following sections:

- IP Installer:** Includes radio buttons for **Enabled** (selected), **View Only**, and **Disabled**.
- Service Ports:** Includes input fields for **Program:** (9000), **HTTP:** (80), and **HTTPS:** (443).
- IPv4 Settings:**
 - IP Address:** Includes radio buttons for **Obtain IP address automatically [DHCP]** (selected) and **Set IP address manually [Fixed IP]**. Below are input fields for **IP Address:** (0.0.0.0), **Subnet Mask:** (0.0.0.0), and **Default Gateway:** (0.0.0.0).
 - DNS Server:** Includes radio buttons for **Obtain DNS server address automatically** (selected) and **Set DNS server address manually**. Below are input fields for **Preferred DNS server:** (0.0.0.0) and **Alternate DNS server:** (0.0.0.0).
- IPv6 Settings:**
 - IP Address:** Includes radio buttons for **Obtain IPv6 address automatically [DHCP]** (selected) and **Set IPv6 address manually [Fixed IP]**. Below are input fields for **IPv6 Address:**, **Subnet Prefix Length:** (64), and **Default Gateway:**.
 - DNS Server:** Includes radio buttons for **Obtain DNS server address automatically** (selected) and **Set DNS server address manually**. Below are input fields for **Preferred DNS server:** and **Alternate DNS server:**.

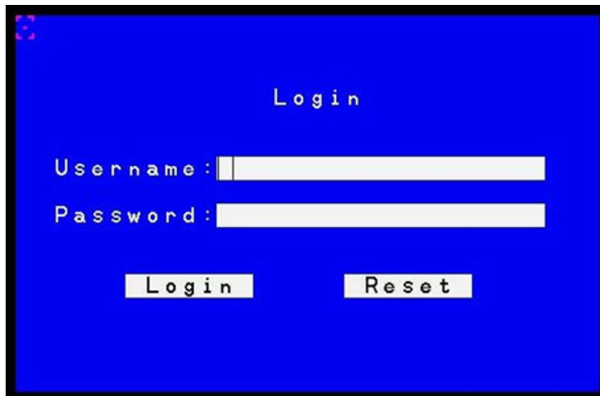
At the bottom right, there are **Save** and **Close** buttons.

- The KVM switch supports both IPv4 and IPv6 addresses. The Network page can set the IP address manually or be automatically assigned via DHCP server. By default, the IP address is set to be automatically assigned via DHCP server. To manually assign an IP address, check the **Set IP address manually** check box in the IPv4 Settings or IPv6 Settings sections, depending on your network.
- When checked, the IP address and DNS server address fields open up. Enter the desired settings in the fields. Once all IP address and DNS server address information is entered, click the Save icon at the bottom of the screen. Upon logging out of the KVM (click the **Logout** icon in the upper-right corner of the screen), the KVM will reset itself and the IP address settings just entered will be implemented.

5. KVM Operation

5.1 Local Console

5.1.1 Local Console Login



When accessing the console KVM switch for the first time, a prompt will appear asking for a username and password. The default username is **administrator**, and the default password is **password**. For security purposes, changing the username and password on this account is strongly recommended. Once the KVM has been set up and user accounts have been created, the login prompt will appear only when a user logs out of the KVM. After logging in for the first time using the default username and password, the OSD Main Screen will appear in Administrator mode with access to all settings and functions.

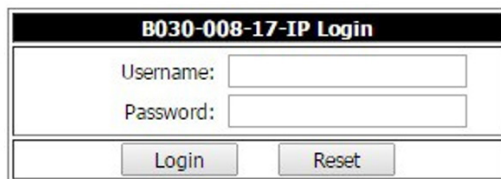
6. Logging In to the KVM over IP

Three methods can be used to connect to the KVM switch over IP: Web Browser, AP Windows Client and AP Java Client. The web interface appearance will vary slightly, depending on which method is used.

6.1 Web Browser

The B030-008-17-IP can be accessed via an internet browser running on any platform. To access the device:

1. Open the browser and specify the IP address of the switch to access in the browser's URL bar.
Note: For security purposes, a login string may have been set by the administrator. If so, include a forward slash and the login string—along with the IP address—when logging in. (e.g. 192.168.0.100/abcdefg). If the IP address and/or login string is not known, contact your System Administrator.
2. When a Security Alert dialog box appears, accept the certificate (it can be trusted). If a second certificate appears, accept it as well. Once all certificate(s) are accepted, the login page will appear.

A screenshot of a web browser login page. The title bar at the top reads "B030-008-17-IP Login". Below the title bar, there are two input fields: "Username:" and "Password:". Below these fields are two buttons: "Login" and "Reset".

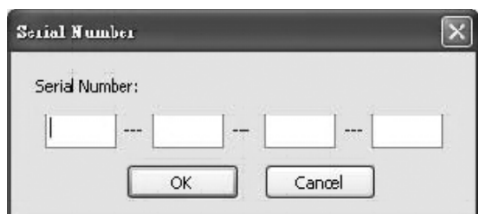
3. Provide your username and password (set by the administrator), then click Login to access the Web Configuration Interface Main Page.

6.2 AP Windows Client Login

When connecting the KVM switch via web browser is not desired or feasible, the AP Windows Client found on the included CD-ROM provides non-browser access to the KVM switch via a Windows computer. If access to the AP Windows Client software is restricted, contact your System Administrator.

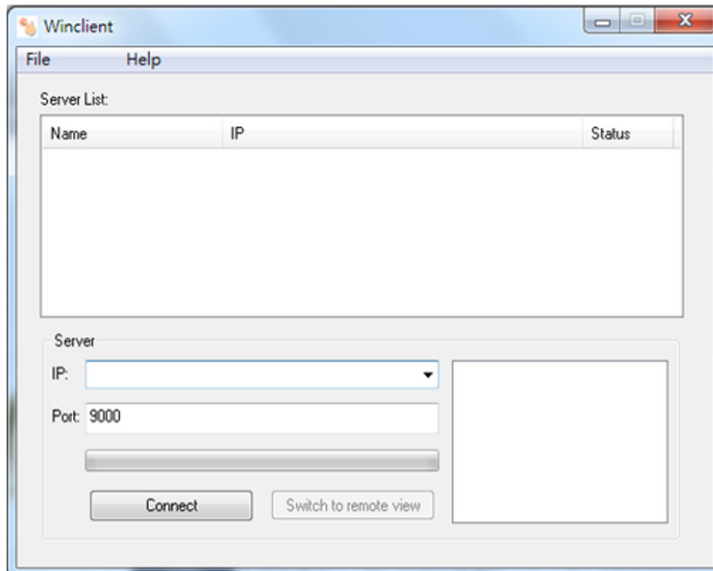
Notes:

- The AP Windows Client can also be downloaded from the Web Configuration Interface.
 - The AP Windows Client requires that Direct X 8.0 or higher be installed on your computer.
1. Save the AP Windows Client to a desired location on a Windows computer.
 2. Double-click on the file and follow the installation instructions.
 3. When the installation is complete, a shortcut icon will be added to the desktop and a program entry will be made in the Windows start menu. Double-click on the icon or select the program entry in the start menu to open the AP Windows Client.
 4. If this is the first time running the utility, a dialog box will appear requesting the software serial number. The serial number can be found on the CD. Enter the serial number (5 characters per box), then click OK.

A screenshot of a "Serial Number" dialog box. The title bar reads "Serial Number". Inside the dialog, there is a label "Serial Number:" followed by five input boxes separated by dashes. At the bottom of the dialog are two buttons: "OK" and "Cancel".

6. Logging In to the KVM over IP

5. Upon entering the serial number, the AP Windows Client main screen will appear.



6. The AP Windows Client will search the network for any KVM switches and display their Model Name(s) and IP Address(es) in the main screen's Server List. If the KVM you wish to connect to is displayed in the list, highlight it and click the Login button. If not, enter the IP address and port number assigned to it and click the Login button.

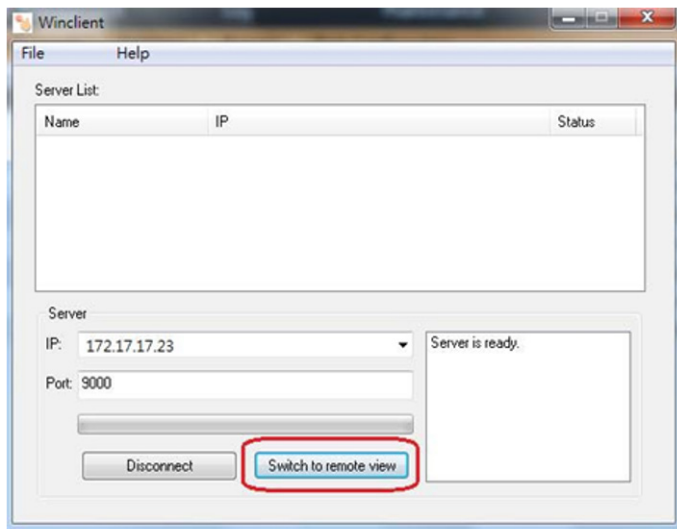
Note: The default port number assigned to the KVM is **9000**.

7. A prompt will appear asking to enter your username and password. If accessing the KVM for the first time, enter the username **administrator** and the password **password**. For security purposes, changing the username and password is strongly recommended.

The screenshot shows a small dialog box with a light gray background. It contains two text input fields. The first field is labeled 'Username:' and the second field is labeled 'Password:'. Below the input fields are two buttons: 'OK' and 'Cancel'.

6. Logging In to the KVM over IP

8. After entering the username and password, the *Switch to Remote View* button on the main screen will become active. Click on the *Switch to Remote View* button to remotely connect to the KVM switch.



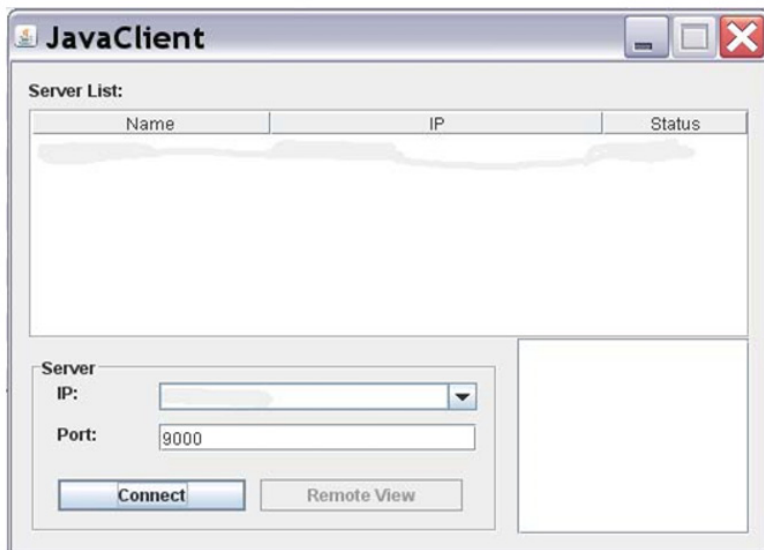
6. Logging In to the KVM over IP

6.3 AP Java Client Login

In cases when an Administrator does not want the KVM Switch to be available via browser and the remote user is not running Windows, the AP Java Client provides access to the KVM switch.

After downloading the AP Java Client, double-click on the program download location on your hard drive to show the connection screen. The AP Java Client connection screen is the same as the Windows version, except it does not contain a menu bar with File and Help menus.

Note: When accessing the AP Java Client for the first time, a prompt will appear requesting a software serial number. This serial number can be found on the included CD.



1. If your KVM is displayed in the Server List, connect by highlighting the desired KVM and clicking the Connect button.

Note: For a switch to appear in the Server List, the Enable Client AP Device List check box in the Operating Mode page of the Web Interface's Device Management section must be checked and the Program service port in the Network page must be set to the same number as in the AP Windows Client Port field.

2. If your KVM does not display in the Server List, enter its IP address in the IP server field and click the Connect button.
3. A prompt will appear requesting a username and password. Enter your username and password, then click OK.
4. Once connected, the Remote View button will be activated. Click on it to access the KVM remotely. Click the Disconnect button to log out of the KVM switch

7. Warranty and Product Registration

3-Year Limited Warranty

TRIPP LITE warrants its products to be free from defects in materials and workmanship for a period of three (3) years from the date of initial purchase. TRIPP LITE's obligation under this warranty is limited to repairing or replacing (at its sole option) any such defective products. To obtain service under this warranty, you must obtain a Returned Material Authorization (RMA) number from TRIPP LITE or an authorized TRIPP LITE service center. Products must be returned to TRIPP LITE or an authorized TRIPP LITE service center with transportation charges prepaid and must be accompanied by a brief description of the problem encountered and proof of date and place of purchase. This warranty does not apply to equipment which has been damaged by accident, negligence or misapplication or has been altered or modified in any way.

EXCEPT AS PROVIDED HEREIN, TRIPP LITE MAKES NO WARRANTIES, EXPRESS OR IMPLIED, INCLUDING WARRANTIES OF MERCHANTABILITY AND FITNESS FOR A PARTICULAR PURPOSE. Some states do not permit limitation or exclusion of implied warranties; therefore, the aforesaid limitation(s) or exclusion(s) may not apply to the purchaser.

EXCEPT AS PROVIDED ABOVE, IN NO EVENT WILL TRIPP LITE BE LIABLE FOR DIRECT, INDIRECT, SPECIAL, INCIDENTAL OR CONSEQUENTIAL DAMAGES ARISING OUT OF THE USE OF THIS PRODUCT, EVEN IF ADVISED OF THE POSSIBILITY OF SUCH DAMAGE. Specifically, TRIPP LITE is not liable for any costs, such as lost profits or revenue, loss of equipment, loss of use of equipment, loss of software, loss of data, costs of substitutes, claims by third parties, or otherwise.

PRODUCT REGISTRATION

Visit tripplite.com/warranty today to register your new Tripp Lite product. You'll be automatically entered into a drawing for a chance to win a FREE Tripp Lite product!*

* No purchase necessary. Void where prohibited. Some restrictions apply. See website for details.

Regulatory Compliance Identification Numbers

For the purpose of regulatory compliance certifications and identification, your Tripp Lite product has been assigned a unique series number. The series number can be found on the product nameplate label, along with all required approval markings and information. When requesting compliance information for this product, always refer to the series number. The series number should not be confused with the marketing name or model number of the product.

WEEE Compliance Information for Tripp Lite Customers and Recyclers (European Union)



Under the Waste Electrical and Electronic Equipment (WEEE) Directive and implementing regulations, when customers buy new electrical and electronic equipment from Tripp Lite they are entitled to:

- Send old equipment for recycling on a one-for-one, like-for-like basis
(this varies depending on the country)
- Send the new equipment back for recycling when this ultimately becomes waste

Tripp Lite has a policy of continuous improvement. Specifications are subject to change without notice.



1111 W. 35th Street, Chicago, IL 60609 USA • tripplite.com/support