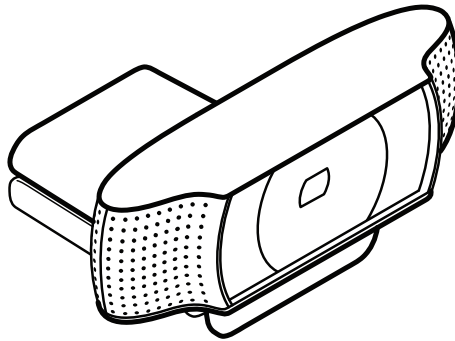


User's Guide

Logitech® HD Pro Webcam for Mobile Interactive Touchscreen (DMCSTP65CBP)



1111 W. 35th Street, Chicago, IL 60609 USA • triplite.com/support

Copyright © 2020 Tripp Lite. All rights reserved.

Logitech and other Logitech marks are trademarks or registered trademarks of Logitech Europe S.A and/or its affiliates in the U.S. and other countries. All other trademarks are the property of their respective owners.

Table of Contents

1. Introduction	2
2. Features	3
3. Initial Setup	4
4. Video Calling	5
5. Using the Webcam with Windows® 10	6
6. Adjusting the Camera Settings	7
7. Sharing Photos and Videos	8
8. Capturing Video and Snapping Pictures	9
9. Viewing and Sharing Using the Gallery	10
10. Using Motion Detection	11
11. Fine Tuning the Webcam During a Video Call	12

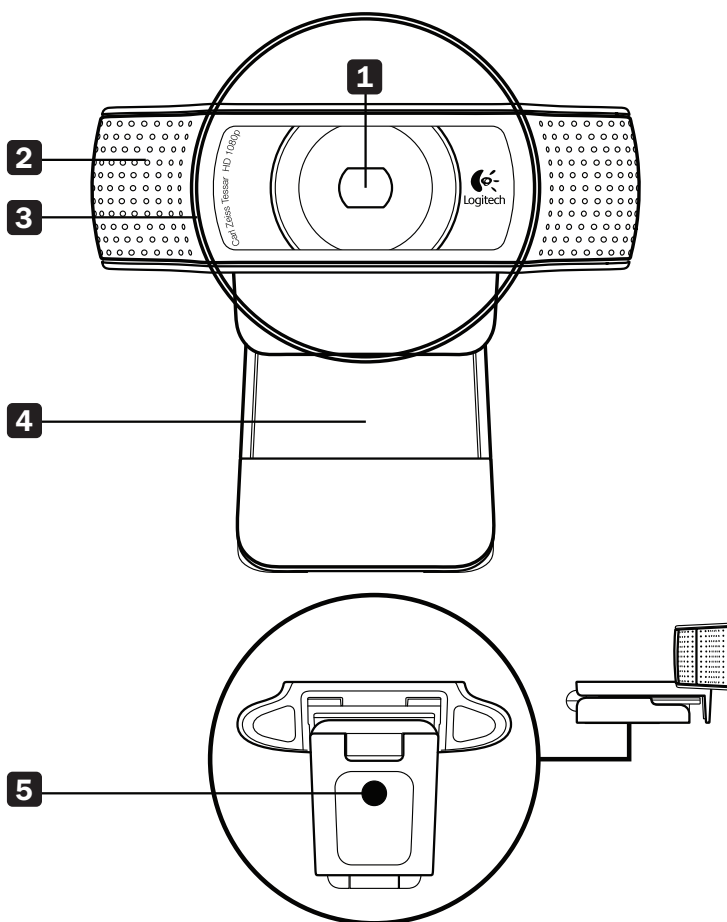
1. Introduction

Use this guide to set up and begin using your Logitech HD Pro Webcam C920.



Read and follow the Important Safety Instructions and Warnings in the Interactive Touchscreen Owner's Manual. Failure to heed these warnings may cause product damage, accident, fire, electric shock, serious injury or death. The warranty may also be affected.

2. Features



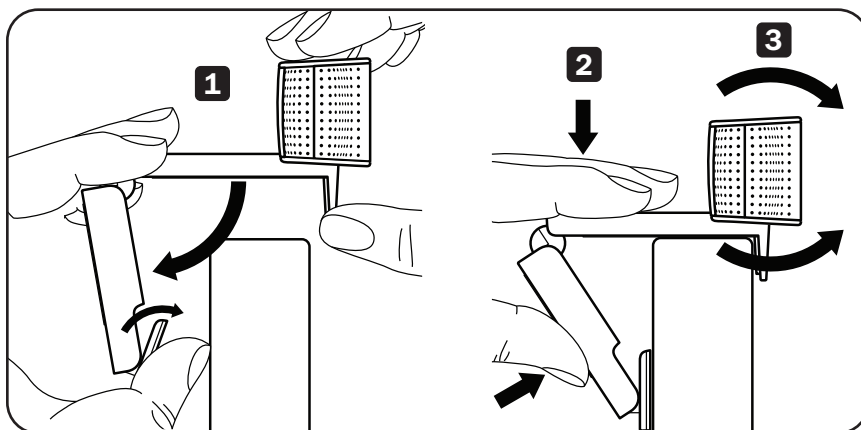
- 1** Carl Zeiss® Autofocus HD 1080p Lens
- 2** Microphone
- 3** Activity Light
- 4** Flexible Clip/Base
- 5** Tripod Attachment

3. Initial Setup

3.1 Mounting the Webcam

Grasp the webcam as shown and open the flexible clip/base with your other hand **1**. Mount the webcam, making sure the foot on the flexible clip/base is flush with the back of the interactive touchscreen display **2**. You can reposition it as needed **3**.

Note: The webcam can also be placed on a desktop or attached to a tripod.



3.2 Connecting the Webcam

Using the included USB cable, connect the webcam to the camera input at the rear of the interactive touchscreen.

3.3 Installing the Webcam Software

If you are using the webcam with Windows 10, the required software downloads automatically when you connect the webcam for the first time and installs silently in the background. **Important:** Make sure you are connected to the Internet, so the software can download.

4. Video Calling

The webcam provides full HD 1080p video calling. To take advantage of video calling, both callers need:

- A webcam
- An installed video-calling application (e.g., Skype™, Zoom or Gmail™)
- A computer with speakers (or a headset) and a microphone; your Logitech webcam has two built-in microphones
- A broadband Internet connection (e.g., DSL, T1 or cable)

5. Using the Webcam with Windows 10

Use the Camera app, available from the Windows 10 start screen, to operate and control the webcam.

Understanding the Camera App



- 1** Preview window. Click or tap to capture photos or videos (depending on whether Video Mode is selected).
- 2** Change webcams (when you have more than one). The face of the Logitech webcam illuminates when selected.
- 3** Adjust the camera settings.
- 4** Activate or deactivate the Timer feature. When activated, there is a three-second countdown to capturing a photo or video.
- 5** Turn Video Mode on (to record videos) or off (to take photos).
- 6** Click or tap on the arrows to scroll through the photos and videos you have captured. Videos are denoted by a timer and play button in the bottom right-hand corner:

00.03 

Tip: The Camera app lets you use the webcam's most popular features quickly and easily. If you want to take advantage of enhanced features, such as motion detection, use the Logitech Webcam Software available from logitech.com/downloads.

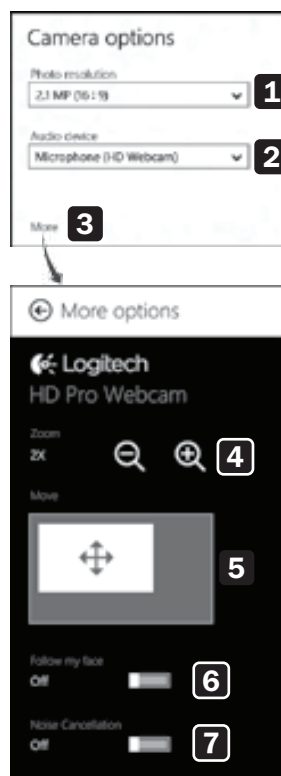
6. Adjusting the Camera Settings

The Logitech software optimizes the settings for your environment automatically. To adjust any of the settings, choose **Camera options**. This is available from the Camera app (see **Understanding the Camera App**) and from within Metro apps that support webcams.

- 1 Choose the required resolution for photo capture or video capture (when in Video Mode).
- 2 Choose the microphone you want to use to record sound in your videos (if you have more than one microphone available).
- 3 Access **More options** to benefit from enhanced features such as digital **Zoom** and **Move**.

If the **More options** pane does not show the Logitech logo and offer enhanced options, it is likely that the Logitech software did not install correctly when you first connected the camera. To reinstall it, go to the Windows Store and look for Logitech Camera Controller.

- 4 **Zoom** in or out to include/exclude your surroundings.
- 5 After zooming in, drag the white box to **pan** (adjust the focus area of the webcam).
- 6 Use **Follow my face** so you are always in the picture.
- 7 Use **noise cancellation** to enjoy clear conversations without annoying background noise.



Depending on the features available with your camera, you can access further advanced settings by scrolling.

7. Sharing Photos and Videos

You can share photos and videos via email, Twitter®, Facebook®, YouTube® or Microsoft OneDrive®.

Follow these steps:

1. In the Camera app, scroll to the photo or video you want to share.
2. Select **Share** in the Charms bar (or press Windows key + H):



3. Choose the media through which you want to share the photo or video.

8. Capturing Video and Snapping Pictures

Quick Capture allows you to take photos and record videos easily. You have easy access to webcam controls and settings:

- 1 Preview window
- 2 Capture mode: photo/video
- 3 Capture button
- 4 Webcam controls
- 5 Photo thumbnails
- 6 Video thumbnails
- 7 Click a thumbnail to enter the Gallery.



9. Viewing and Sharing Using the Gallery

Clicking on an image thumbnail in the Gallery **1** opens the video or photo in the review window **2**.

You can then:

- 3** Attach the video or picture file to an email.
- 4** Edit the photo or splice together video.
- 5** Upload the picture or video to Facebook.
- 6** Upload a video to Twitter or YouTube.

You may also drag and drop a gallery image onto one of the function tiles (**3-6**) to launch an editing application or to attach or upload.



10. Using Motion Detection

- Set up the webcam to record video when it detects movement.
- Adjust captured video duration and detection sensitivity.
- Captured video is automatically saved to your computer.
- View content in the Gallery or upload it using the One-Touch Upload window.



11. Fine Tuning the Webcam During a Video Call

- 1 Launch the Webcam Controller when on a video call.
- 2 Use **pan** and **tilt** to find the best angle.
- 3 **Zoom** in or out to include/exclude your surroundings.
- 4 Use **Follow my face** so you are always in the picture.
- 5 Enjoy clear conversations without annoying background noise.
- 6 Correct for poor lighting environments using **RightLight**.
- 7 Choose auto- or manual focus.
- 8 Adjust advanced webcam settings.



Tripp Lite has a policy of continuous improvement. Specifications are subject to change without notice.
Photos and illustrations may differ slightly from actual products.



1111 W. 35th Street, Chicago, IL 60609 USA • tripplite.com/support